

# RESIDENTIAL PRODUCTS PRICE LIST



## CLIMATEMASTER

GEOHERMAL  
HEATING AND COOLING COMFORT SYSTEMS  
EFFECTIVE: 5 JANUARY, 2015  
REVISED: 12 DECEMBER, 2014



## Table of Contents & Category Code

The ClimateMaster Advantage .....	2
Trilogy® and Tranquility® Packaged System Comparison .....	3
Tranquility® Split and Tranquility® Air Handler and Cased Coil System Comparison .....	4
Tranquility® Water-to-Water System Comparison .....	5
Airflow Configurations .....	6
Accessories .....	7
Thermostats and Service Tools .....	8
Accessory Compatibility .....	9
Trilogy® 45 Q-Mode® (QE) Packaged Geothermal Heat Pumps Upflow - Downflow - Horizontal Units .....	11
Trilogy® Packaged Unit Features .....	12
Trilogy® Packaged Ratings .....	14
Trilogy® 45 Q-Mode® (QE) Series .....	15
Tranquility® Packaged Unit Features .....	18
Tranquility® 30 Two-Stage Digital (TE) Series, 2T .....	20
Tranquility® 22 Two-Stage Digital (TZ) Series, 2T .....	25
Tranquility® 20 Single-Stage (TS) Series, 2T .....	28
Split Unit Features .....	32
Split Unit Ratings .....	34
Tranquility® Two-Stage Digital Indoor Split (TES), 2T .....	35
Tranquility® Two-Stage Digital Outdoor Split (TEP) Series, 2P .....	36
Tranquility® Air Handler (TAH) and Cased Coil (TAC) Features .....	37
Tranquility® Air Handler (TAH), RA .....	38
Tranquility® Cased Coil (TAC), RA .....	39
Tranquility® Water-to-Water Features .....	40
Tranquility® Medium Temperature Water-to-Water Ratings .....	41
Tranquility® Medium Temperature Water-to-Water (TMW) Series, 2W .....	42
Tranquility® High Temperature Water-to-Water Ratings .....	43
Tranquility® High Temperature Water-to-Water (THW) Series, 2W .....	44
Loop Accessories, RH .....	45
Installation Accessories, RH .....	48
Geothermal Loop Pipe, RP .....	49
Geothermal Fittings, RF .....	50
Socket Fusion Tools, RT .....	51
Service Tools, RT .....	52
Warranty, RVW .....	53
Unit Selection Guide .....	55
Distributor Notes, Replacement Filters & Weights .....	57
Shipping Weights and Dimensions .....	58
Revision Log .....	60

Revised: 12 December, 2014C

## The ClimateMaster Advantage

### Why ClimateMaster?

For over 50 years, ClimateMaster has been delivering innovative products focused on enhancing business and home environments around the world. As the world's largest and most progressive leader in the water-source and geothermal heat pump industry we are committed to excellence - not only in the design and manufacture of our products, but in our people and services.

### Made in the USA

All of ClimateMaster's 610,000 square feet in facilities operate in Oklahoma City, Oklahoma, which means ClimateMaster units are manufactured in the United States using American labor. While the trend nationally is to out-source labor outside the United States, ClimateMaster has made the commitment to remain proudly American made.

### ClimateMaster Design

From concept to product, ClimateMaster's Integrated Product Development Team brings a fusion of knowledge and creativity that is unmatched in the industry today. Drawing from every aspect of our business: Engineering, Sales, Marketing, and Manufacturing, our Development Team has created some of the most advanced, efficient, and versatile products available.

### Innovation, Concept, Needs

Great products are born from necessity. Whether it is a need to reduce sound, fit in a smaller space, make easier to service, achieve better efficiencies, or due to changing technologies, or new government regulations, ClimateMaster leads the industry in advancing the form, fit and function of water-source and geothermal heat pumps. Our Design Team continually strives for even the slightest improvement to our products. It is this continual drive for excellence that sets ClimateMaster apart from all other manufacturers.

### The Future of ClimateMaster

Our long history of innovation has paved the way for future endeavors with a solid platform of success. Growing markets in Europe and Asia demand a different way of not only manufacturing our products, but also successfully marketing them. In looking ahead, we continually strive for better processes, better designs, and better innovations that will keep ClimateMaster as the global leader in water-source and geothermal heat pumps.

### Advantage Exclusives

Being a leader in innovation, ClimateMaster brings industry firsts, as well as industry exclusives, to our family of products.

### Geothermal Water-to-Air

Family / Series	Models
<b>Trilogy® Packaged</b>	
Trilogy® 45 Q-Mode®	QEV, QEH, QED
<b>Tranquility® Packaged</b>	
Tranquility® 30 Digital	TEV, TEH, TED
Tranquility® 22 Digital	TZV, TZH
Tranquility® 20	TSV, TSH, TSD
<b>Split Systems</b>	
Tranquility® Digital Indoor/Outdoor	TES/TEP
Tranquility® Air Handler	TAH
Tranquility® Cased Coil	TAC

## Trilogy® and Tranquility® Packaged Systems



Trilogy® 45 Q-Mode® (QE)



Tranquility® 20  
and 30 Digital



Tranquility® 22

### Trilogy® and Tranquility® Packaged System Comparison

- Standard
- Optional

		Trilogy®	Digital		Non-Communicating
		Trilogy® 45 Q-Mode® (QE)	Tranquility® 30 Digital (TE)	Tranquility® 22 Digital (TZ)	Tranquility® 20 (TS)
Efficiency	Cooling	45 EER	29.6 EER	23.7 EER	21.9 EER
	Heating	5.1 COP	5.0 COP	4.1 COP	4.3 COP
ENERGY STAR Designation		Most Efficient			Tier 3
30% Federal Tax Credit Eligible		Yes	Yes	Yes	Yes
Compressor		Variable	Two Stage	Two Stage	One Stage
Q-Mode® - Free Cooling		●			
Communicating System		iGate™ Connect — Internet Connected	iGate™	iGate™	
Advanced Monitoring and Diagnostics		●			
Wi-Fi Communicating Thermostat		●			
Non-Communicating Electronic Controls					○
Hot Water Generation		Dedicated Full Time	Part Time	Part Time	Part Time
Front Panels		Stainless Steel	Stainless Steel	Painted	Stainless Steel
Air Filter		2" MERV 11	2" MERV 11	1" MERV 8	2" MERV 11
vFlow™ Internal Variable Water Flow		●	●	●	
Indoor Fan	Variable Speed	●	●	●	○
	Single Speed				●
Configuration	Vertical Upflow	○	○	○	○
	Horizontal	○	○	○	○
	Vertical Downflow	○	○		○
Air Coil		Micro-channel	Tin Plated*	Tin Plated	Tin Plated
Swing Out Control Box		●	●	●	Hinged Cover
Whole House Dehumidification		Trilogy® Variable Speed	Fan Controlled	Fan Controlled	ClimaDry™
Warranty - 10-Year Parts; 5-Year Labor Allowance		●	●	●	●
Warranty - 10-Year Parts; 10-Year Labor Allowance		○	○	○	○

\*TE038 uses Micro-channel aluminum coil

## Tranquility® Split and Tranquility® Air Handler and Cased Coils Systems



### Tranquility® Split and Tranquility® Air Handler and Cased Coils System Comparison

- Standard
- Optional

		Indoor Split	Outdoor Split	Air Handler	Cased Coil
		Tranquility® Digital (TES)	Tranquility® Digital (TEP)	Tranquility® Digital (TAH)	Tranquility® (TAC)
Efficiency*	Cooling	26.1	26.1		
	Heating	4.5	4.5		
ENERGY STAR Designation		Most Efficient	Most Efficient		Most Efficient
30% Federal Tax Credit Eligible		Yes	Yes		
Compressor		Two Stage	Two Stage		
Front panel		Stainless Steel	Painted		
vFlow™ Internal Variable Water Flow		●	●		
External Fixed Speed Flow Controller					
iGate™ Communicating System		●	●	●	
Non-Communicating Electronic Controls					
Multi-Positional				●	●
Hot Water Generator	Built-In	○	○		
Variable Speed Indoor Fan				●	
Warranty - 10-Year Parts; 5-Year Labor Allowance		●	●	●	●
Warranty - 10-Year Parts; 10-Year Labor Allowance		○	○	○	●

\*When matched with Tranquility® Air Handler

## Tranquility® Water-to-Water Systems



Tranquility® Medium Temperature Water-to-Water



Tranquility® High Temperature Water-to-Water

### Tranquility® Water-to-Water System Comparison

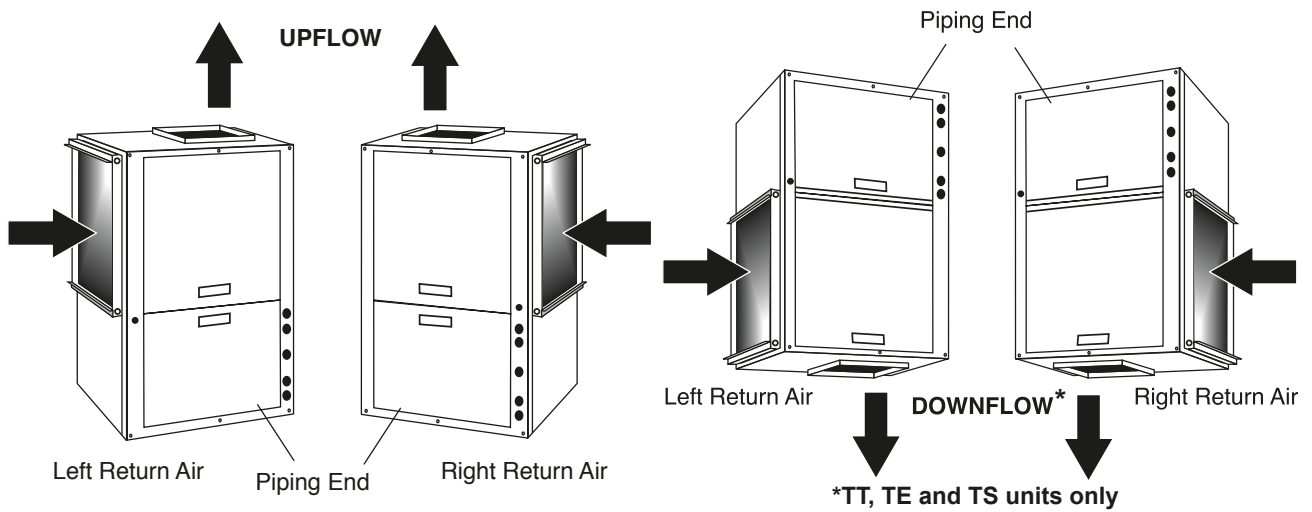
● Standard

○ Optional

		Tranquility® Medium Temperature Water-to-Water (TMW)	Tranquility® High Temperature Water-to-Water (THW)
Efficiency	Cooling	16.4	N/A
	Heating	3.1	3.3
ENERGY STAR Designation		Tier 3	
30% Federal Tax Credit Eligible		Yes	Yes
Modes		Heat <u>AND</u> Cool Water	Heating Only with DEDICATED Domestic Hot Water
Generates Hot Water up to 130°F EWT		●	
Generates Hot Water up to 145°F LWT			●
Generates Chilled Water		●	
Compressor		Single-Stage	Single-Stage
Compressor "run" and "fault" display		Lights on Front of Cabinet	Digital Display
Coaxial Source Heat Exchanger		●	●
Load Heat Exchanger		Coaxial	Brazed Plate
Dual-Level Compressor Isolation		●	●
Stainless Steel Front Panels		●	●
Non-Communicating Electronic Controls		●	
Communicating Electronic Controls			●
External Fixed-Speed Flow Controller		○	○
Warranty - 10-Year Parts; 5-Year Labor Allowance		●	●
Warranty - 10 Year Parts; 10-Year Labor Allowance		○	○

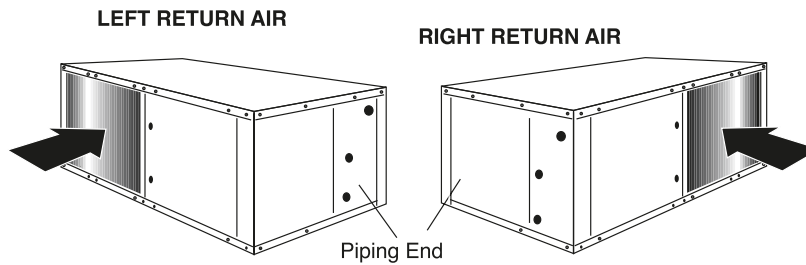
## Airflow Configurations

### Vertical Configuration

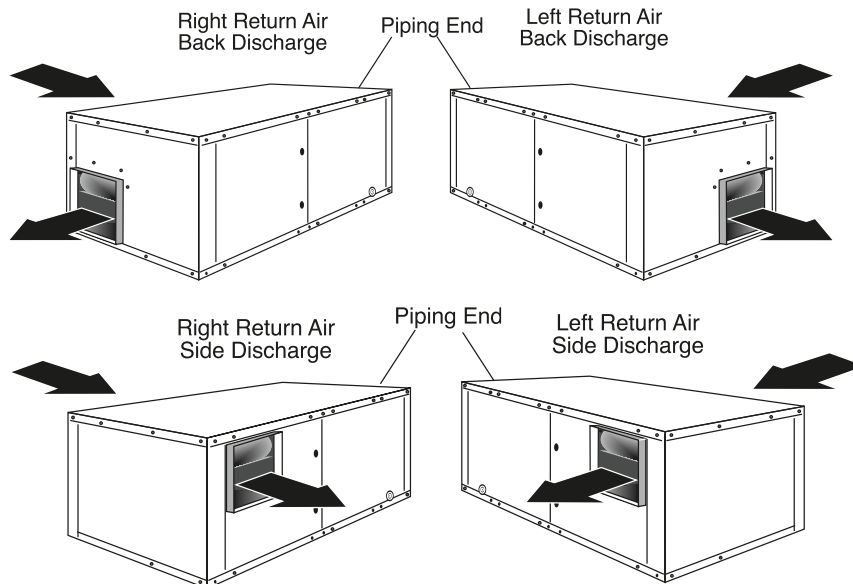


### Horizontal Configuration

#### Return Options



#### Discharge Options



To further improve comfort and convenience, ClimateMaster offers the following accessories

**Water-to-Air**

**EarthPure® Electronic Air Cleaner**

ClimateMaster's EarthPure® Polarized Media Electronic Air Cleaner installs directly into the 2"/1" filter rack of your ClimateMaster heat pump or air handler. The electronically enhanced media combines elements of both electronic and media air cleaners. It efficiently removes particles down to 0.3 microns and REMOVES ODORS.



**Tranquility® Secondary Drain Pan**

The ClimateMaster Secondary Drain Pan was designed specifically for Tranquility® Horizontal foot prints. This drain pan matches the unit perfectly for open ceiling applications and to meet required mechanical codes.



**Tranquility® Unit Vibration Isolation Pad**

High density rubber pad for quiet operation. The sound/vibration isolation pad is ideal for second floor, pier and beam construction and attic installations.



**Tranquility® Unit Stand**

Compliment the ClimateMaster Tranquility® product line with a matching unit stand. This stand is ideal for areas that must have raised equipment to meet required mechanical codes.



**Auxiliary/Electric Heater**

Internally mounted in vertical cabinets. Externally mounted on horizontal cabinets. Sizes 15-20 kW AGM\*A and 4-20 kW AGM\*C include internal circuit breaker. ETL listed. Circuit fusing per UL/NEC. Wiring harness connections included in residential units.



**Flow Controller**

Small Compact, proven design, easy to mount, urethane foam insulated to prevent condensation, includes factory supplied full flow service valves for easy loop charging, Uses double o-ring adaptor fittings for unit and loop connections. Gray polystyrene cabinet with black pumps. Composite 3-way valves. 230VAC pump(s).



**iGate™ Smart Tank**

Industry's first Communicating water storage tank, allows full-time year-round hot water by communicating water temperature to the Trilogy® Q-Mode® unit. The control on the Smart tank controls the Titanium electric elements to minimize use. The Seamless polybutene tank is designed for a lifetime of highly efficient use and is impervious to corrosion. The thick polyurethane foam offers superior insulation compared to other storage tanks. The tough, molded polyethylene exterior resists dents, scratches, and salt air.



**Remote Thermostat Sensor**

Outdoor or Remote Temperature Sensor

**SecureStart™ Compressor Soft Start Kit**

Single phase compressors typically have starting inrush currents that range from five to seven times their normal running current. The SecureStart™ module is designed to reduce inrush current to the compressor by up to 75% and prevents lights dimming when the compressor starts up.



**Water-to-Water**

**Anti-Scald Valve**

Anti-scald valve be used in DHW systems where HWG setpoint is 150°F



**Accessory Pump Slaving Module**

Allows a single flow controller to be controlled by 2 different units. Eliminates additional field wiring and extra relays.



## Thermostats and Service Tools

### Thermostats - Communicating



AWC99B01

Internet-connected, Digital, communicating, programmable, variable stage heat – cool. Configure, monitor and diagnose system from thermostat or dealer portal on internet.  
ONLY USED WITH TRILOGY.



ATC32U02

Digital, communicating, programmable, 3-stage heat, 2-stage cool. Configure, monitor and diagnose system from thermostat.

### Service Tools - Communicating



ACDU02

Configuration diagnostic tool. For use when communicating thermostat is not used.

### Thermostats - Non-Communicating



ATP32U03/ATP32U04

Programmable, digital, 3 stage heat, 2 stage cool, auxiliary, fault LED. Use 04 with ClimaDry® units.



ATA22U01

Non-programmable 2 stage heat, 2 stage cool; aux, emergency, fault LED

## Accessory Compatibility

Accessories	Packaged				Split			Water-to-Water	
	Trilogy®	Tranquility® Digital		Tranquility®	Tranquility® Digital			Tranquility®	
	QE	TE	TZ	TS	TES	TEP	TAH	TMW	THW
iGate™ Smart Tank	X								
AWC iGate™ Connect thermostat	X								
ATC thermostat/ ACD service tool		X	X		X	X	X		
ATP/ATA Thermostats		X	X	X	X	X	X		
EarthPure® Polarized Media Electronic Air Cleaner		X	X	X			X		
Secondary Drain Pan	X	X		X					
Tranquility® Unit Vibration Isolation Pad	X	X	X	X	X				
Tranquility® Unit Stand	X	X	X	X	X				
Auxiliary Electric Heater	X	X	X	X			X		
Remote/Outdoor Temperature Sensor	X	X	X	X	X	X			
ClimaDry Potentiometer Kit				X					
Anti Scald Valve		X	X	X	X	X		X	X
Accessory Pump Slaving Module				X				X	X
Secure Start Compressor Soft Start Kit		X	X	X	X	X		X	X
Remote Mount HWG (Desuperheater) Kit						X			

## Trilogy® Packaged Units



### Trilogy® 45 Q-Mode® (QE) Packaged Geothermal Heat Pumps Upflow - Downflow - Horizontal Units

ClimateMaster has achieved an efficiency breakthrough with the introduction of the Trilogy® 45 series, the first geothermal heat pump ever certified by the Air Conditioning, Heating, and Refrigeration Institute (AHRI) to exceed 40 EER at groundloop (GLHP) conditions.

The revolutionary new Trilogy® 45 utilizes variable-speed technology to provide an extremely wide range of heating and cooling capacities with the ability to perfectly match loads to as low as 30% of maximum. In addition, patent-pending Q-Mode® technology saves an additional 80% on hot water production by producing year-round domestic hot water on demand, even when space conditioning is not required at over 500% efficiency. Q-Mode® also delivers FREE cooling, when the system is simultaneously cooling and generating hot water.

In addition to efficiency, the Trilogy® 45 Q-Mode® delivers unsurpassed comfort and humidity control by precisely matching it's capacity to the heating and cooling load. For installing and servicing contractors, it also offers the latest technology to configure and diagnose the system electronically using communicating controls and sensors that monitor every critical aspect of system operation to ensure peak performance. The iGate™ Connect web-enabled communicating system further enhances the system by allowing remote access to the thermostat to consumers as well as remote troubleshooting and

configuration for dealers. With iGate™ Connect, the dealer can log in to the system from any web-enabled computer/mobile device to make changes to settings.

### TRIOLOGY: The first geothermal unit to surpass 45 EER by utilizing a "Trilogy" of variable-speed technologies

1. Variable-Speed Inverter Compressor
2. Variable-Speed Fan Motor
3. Variable-Speed Water Pump

### Q-Mode® (Patent-pending): Delivers comfort and efficiency in four modes

Domestic hot water is a significant portion of a home's energy usage. Q-Mode® not only significantly reduces a home's heating and cooling energy costs, it also delivers year-round dedicated hot water to further reduce energy usage related to hot water generation by 80%.

Q-Mode® operates in four modes:

1. Space Heating
2. Space Cooling
3. Hot Water while space cooling
4. Dedicated Hot Water when not in space cooling mode

## Trilogy® 45 Q-Mode® (QE) Packaged Geothermal Heat Pumps Upflow - Downflow - Horizontal Units

In addition to the savings on hot water generation, Trilogy® Q-Mode® delivers FREE space cooling when simultaneously heating hot water. The patent-pending technology moves heat between the home and the hot water tank, delivering more savings.

### Internet-Connected iGate™ Communicating System

Trilogy® 45 Q-Mode® breaks new ground in optimized comfort, efficiency, and serviceability by utilizing industry-first and exclusive iGate™ two-way communicating controls as a standard option with every unit. Two-way communication between intelligent components inside the system ensures precise coordination of operation to achieve optimized reliability, comfort AND efficiency.

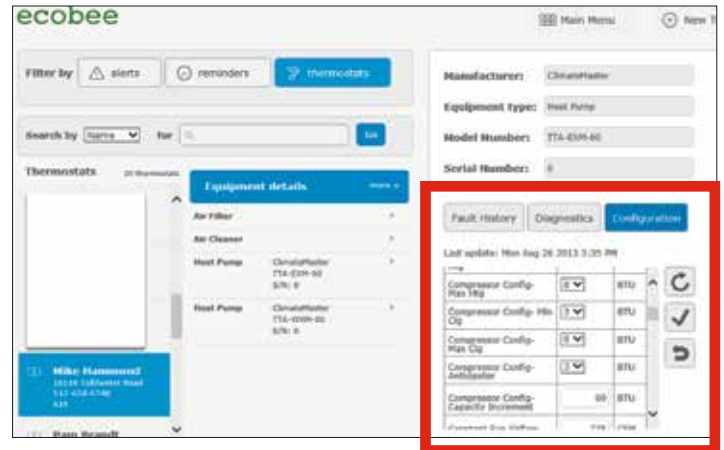
This plain English communication is now extended from the unit and thermostat to the internet! The NEW iGate™ Connect thermostat connects the iGate™ communicating system to the internet through Wi-Fi. This allows monitoring, configuration and diagnosis of the system through:

- iGate™ Connect digital thermostat
- PC service tool connected to the unit
- Dealer portal on the internet



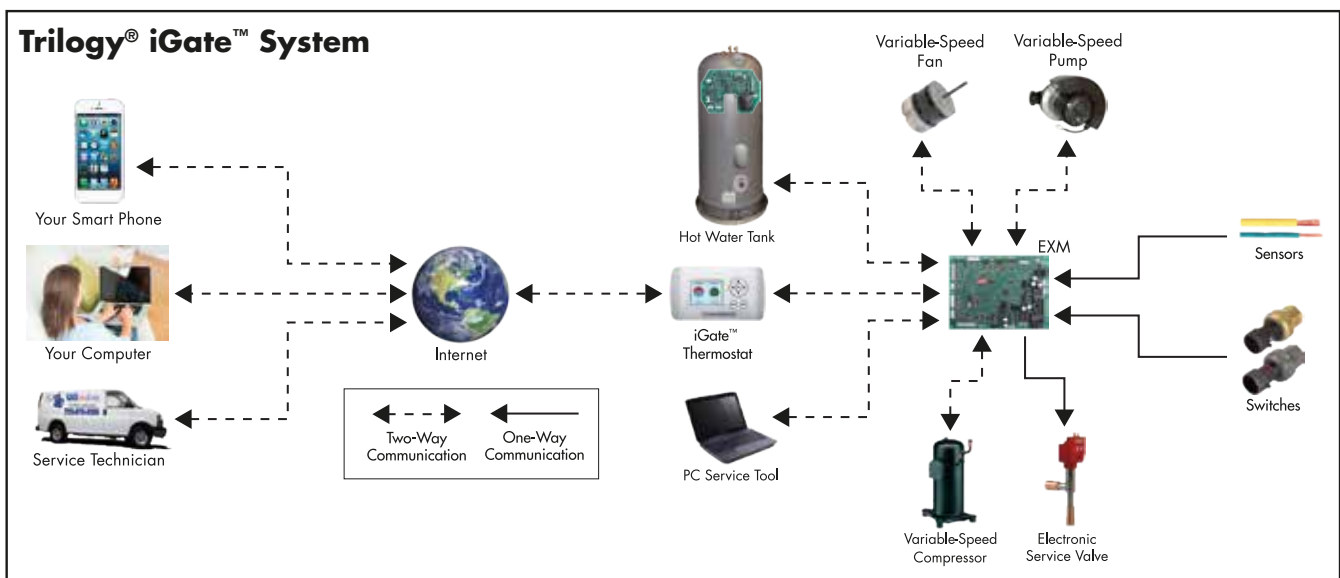
What is truly revolutionary about the iGate™ Connect system is that dealers (from their office, home or vacation) can now monitor unit operation (47 data points), faults

(including details and conditions at fault) and change settings (15 settings) from an internet-connected computer or mobile device



### iGate™ Smart Tank

iGate™ Smart Tank is the first communicating smart water tank in the industry and communicates directly with the Trilogy® 45 Q-Mode® to produce full-time domestic hot water at over 500% (5.0 COP) efficiency. The iGate™ Smart Tank's polyurethane construction with super insulation delivers additional savings by not losing heat and unlike steel water tanks, is not prone to rust.



## **Trilogy® 45 Q-Mode® (QE) Packaged Geothermal Heat Pumps Upflow - Downflow - Horizontal Units**

### **Trilogy® 45 Q-Mode® (QE) Packaged Units Features:**

Trilogy® 45 delivers intelligent energy savings – combining highest efficiencies ever recorded with intelligent, internet connected communicating controls.

ClimateMaster residential units share many of the same innovative features. Specific model features are listed individually by product series. The following features are standard on all residential Trilogy® units:

#### Efficiency

- Fully variable system that matches loads down to 30% of total capacity, delivers significant energy savings and highest comfort.
- Up to 45 EER / 5.1 COP efficiency – highest efficiencies ever recorded in AHRI
- Q-Mode® delivers additional savings generating full-time, year-round domestic hot water heating, with over 80% savings.
- Free cooling when Trilogy® is simultaneously space cooling and generating hot water
- vFlow™ Internal Water Flow delivers 70-80% energy savings in part load vs. single-speed flow centers
- iGate™ Smart Tank is super insulated to deliver higher energy savings
- Delivers max capacity through out the operating range - 20°F to 120°F entering water temperatures
- Brazed-plate heat exchanger (QE)
- AHRI/ASHRAE/ANSI/ISO 13256-1 certified
- US EPA Energy Star compliant

#### Comfort

- Trilogy® delivers the highest comfort of any system, driven by variable speed technology. Trilogy® modulates and maintains slower speeds for longer when the demand is lower, delivering consistent temperature and humidity control.
- On extreme hot or cold days, Trilogy® speeds up to deliver full heating or cooling capacity regardless of the entering water temperature.
- Trilogy® can recover quicker from spikes in hot water demand, due to its hot water capacity compared to hot water heaters on the market today.

#### Convenience

- Homeowners can customize their comfort over the internet – with internet-connected PC, smart phone app or mobile device. Set schedules, vacation, away, change set points, reminders/alerts on the internet.

- Homeowners can also electronically set hot water temperatures on the thermostat instead of at the tank.
- Dealers don't need to set dip switches and count LED flashes – all configuration is done electronically from the iGate™ Connect thermostat, PC service tool or dealer portal on the internet.
- If the unit is not running optimally, the system will e-mail the dealer and homeowner, notifying them of a potential issue. The dealer can log in to the system remotely over the internet to review operation and determine the issue. If the adjustment requires a site visit, the dealer doesn't need to pull out gauges. All measurements are built in to the unit. Information from 21 sensors and smart components is available on the internet (on dealer portal), communicating iGate™ Connect thermostat or PC service tool.
- Further improving convenience for the dealer, ClimateMaster offers an Android app to help understand fault codes, potential issues and ways to address the issue.
- vFlow™ Internal Water Flow saves time on installation with all water-flow components built in to the system. With an expansion tank, vFlow™ also helps maintain loop pressure to reduce call-backs.
- EXM boards in the unit can be re-programmed in the field using the PC service tool, eliminating a return trip to replace the board.

#### Quiet

- Engineered to be ultra-quiet, the Trilogy® delivers some of the lowest sound levels in the industry.
- Operating at part-load capacities (where the Trilogy® operates most of the time), compressor sound is minimal, further reducing sound levels and increasing comfort.
- Double-compressor isolation for ultra-quiet operation
- Variable-speed ECM adjusts to multiple duct system applications and provides soft start for added comfort and low sound levels.
- Ultra-quiet fully insulated compressor and air handler section.

#### Reliability

- iGate™ monitors and protects the unit from abnormal operation
- Micro-channel aluminum air coil for long life and higher efficiency

## Trilogy® 45 Q-Mode® (QE) Packaged Geothermal Heat Pumps Upflow - Downflow - Horizontal Units

### Trilogy® 45 Q-Mode® (QE) Packaged Units Features (Continued):

- Industry-leading number of safeties:
  - Anti-short cycle
  - High pressure
  - Low pressure
  - Intelligent fault retry
  - Condensate overflow
  - Field-selectable low temp cutout for water or glycol installations (future)
  - Low loop pressure
  - Low water flow detection
  - Over/undervoltage (control, blower, compressor, pump)
  - Pressure sensor out of range/not reading
  - Temperature sensor out of range/not reading
  - Space temperature sensor not reading
  - Space humidity sensor not reading
  - Incorrect unit configuration
  - High EWT – like UPS
  - Low EWT – like UPS
  - Loop pump locked or shutdown
  - Hot water pump locked or shutdown
  - Monitoring of hot water heat exchanger to determine if fouling has occurred above a specified level.
  - Reduced hot water setpoint due to heat exchanger fouling
  - Automatic airflow adjustment to maintain compressor within operating envelope.
  - Automatic waterflow adjustment to maintain compressor with operating envelope.
  - Automatic waterflow adjustment to reduce nuisance trip potential with low loop temperatures.
  - Monitoring of drive current and temperature to protect electronics and compressor.
  - Monitoring of ECM temperatures and current to protect electronics and motor.
  - Low leaving air temperature if the airflow isn't set properly or if capacity is low.
  - High leaving air temperature if the airflow isn't set properly or if the capacity is low.
  - Leaking refrigerant check valve detection.
  - Leaking water check valve detection.
- Stainless steel drain pan for long life
- Run tested to assure maximum efficiency and reliability
- 1" FPT swivel water coax and Q-Mode® hot water connections
- Externally trapped condensate piping
- Circuit breaker protected 75VA transformer
- Durable galvanized steel cabinet with powder coat paint finish

- AHRI & ETL listed

#### Appearance

- Best looking unit in the industry
- Black textured powder coat painted finish and stainless steel front accent panels

#### Warranty

- Trilogy® Packaged products are backed with a limited 10-year parts and 5-year labor allowance. The additional optional 5-year labor allowance extends the limited warranty to 10-year parts and 10-year labor allowance.

#### Installation

- iGate™ four-wire connection and electronic configuration reduce installation time – using PC service tool or communicating thermostat
- vFlow™ internal components reduce installation time
- Electronic configuration (in plain English) on thermostat/PC service tool/dealer portal on internet:
- Independent heating, cooling, dehumid, fan only CFM selection
- Unit capacity min/max selection
- Delta-T selection; freeze protection setting
- Blower off delay
- Loop pump configuration (single / parallel)
- Compressor short cycle
- Hot water cut-out and offsets (in cooling and heating)
- Aux heat deadband
- Left or right-hand return air positions
- Narrow cabinet design for easy movement through doorways
- Internal electric heat (optional) for easy field installation
- Factory-installed deluxe 2" filter rack/duct collar with 2" thick high performance MERV 11 replaceable, pleated air filter/factory supplied supply air duct starting collar

#### Diagnostics

- iGate™ diagnostics on the thermostat/PC service tool/dealer portal on internet (99 fault conditions, possible causes, 47 conditions [temp, flow, superheat/subcool, loop pressure] at time of fault) set the Trilogy® models apart from the competition. Making this information available on the dealer portal on the internet sets it up further apart from the competition.
- Troubleshooting Android app for each fault code further improves ease of diagnosing

## Trilogy® 45 Q-Mode®(QE) Packaged Geothermal Heat Pumps Upflow - Downflow - Horizontal Units

### AHRI/ASHRAE/ANSI/ISO 13256-1 Efficiencies:

### Trilogy® 45 Ratings AHRI/ASHRAE/ISO 13256-1 English (IP) Units

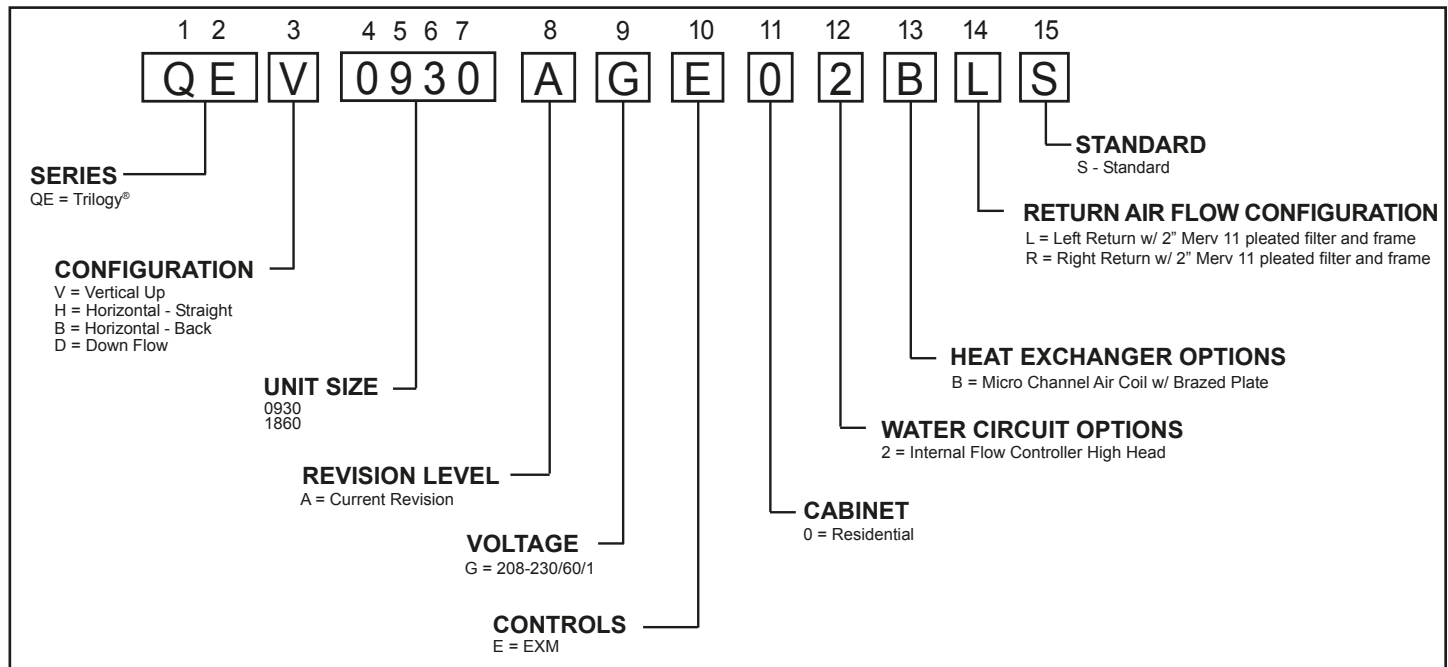
ASHRAE/AHRI/ISO 13256-1. English (IP) Units

Model	Capacity Modulation	Water Loop Heat Pump				Ground Water Heat Pump				Ground Loop Heat Pump			
		Cooling 86°F		Heating 68°F		Cooling 59°F		Heating 50°F		Cooling Full Load 77°F Part Load 68°F		Heating Full Load 32°F Part Load 41°F	
		Capacity Btuh	EER Btuh/W	Capacity Btuh	COP	Capacity Btuh	EER Btuh/W	Capacity Btuh	COP	Capacity Btuh	EER Btuh/W	Capacity Btuh	COP
QE0930	Part 1	9,000	24.1	12,000	8.7	9,500	64.0	12,000	5.9	9,000	43.2	12,000	5.1
	Part 2	12,000	23.6	18,000	8.1	12,000	68.1	18,000	5.7	12,000	44.3	18,000	4.9
	Part 3	18,000	21.4	24,000	7.4	18,000	56.0	24,000	5.3	18,000	37.2	24,000	4.6
	Full	24,000	19.3	30,000	6.6	24,000	42.0	30,000	4.8	24,000	24.3	30,000	3.6
QE1860	Part 1	18,000	25.2	24,000	8.6	19,000	62.1	24,000	6.1	18,000	45.1	24,000	5.1
	Part 2	24,000	24.4	36,000	7.6	24,000	62.0	36,000	5.6	24,000	43.0	36,000	4.7
	Part 3	36,000	20.8	48,000	6.6	36,000	48.9	48,000	5.1	36,000	35.2	48,000	4.2
	Full	48,000	17.3	60,000	5.5	48,000	35.5	60,000	4.3	48,000	21.6	60,000	3.3

Tested in Accordance with ISO 13265-1

Ground Loop Heat Pump ratings based on 15% methanol antifreeze solution

All ratings based upon operation at lower voltage of dual voltage rated models



*NOTE: Above model nomenclature is a general reference. Consult individual specification sections for detailed information.*

## QEV Variable Capacity Packaged Unit Pricing - Vertical

QEV packaged unit pricing - Vertical					
Closed loop w/Internal Flow Controller		Position		QEV0930	QEV1860
		1-6		\$14,636	\$17,567
Accessories	Auxiliary / Emergency heater	4 KW	AGM4AAG	\$227	
		5 KW	AGM5AAG	\$300	
		8 KW	AGM8AAG	\$340	
		10 KW	AGM10AAG	\$355	
		10 KW	AGL10AAG		\$371
		15 KW	AGL15AAG		\$588
		20 KW	AGL20AAG		\$641
		Single circuit adapt.	16B0002N02	Single circuit adaptor kit for 15-20 kW heater	
	Web-based, Communicating, Programmable Thermostat	AWC99B01R		\$433	
	Communicating water tank	50 Gallon	AWS050AW1245S	\$2,009	
		85 Gallon	AWS085AW1245S	\$2,421	
		105 Gallon	AWS105AW1245S	\$2,575	
	Unit pad (Qty 5)	AUGSP2427		\$413	
		AUGSP2732			\$595
	Packaged unit stand (Qty 4)	ACSVAMBS		\$1,273	
ACSVLBS			\$1,535		
Outdoor temp. sensor	AST008		\$54		
Service Tool, Field Diagnostics	ASVCTOOL01		\$206		
EarthPure® Air cleaner	Air cleaner	Model	AAC28242CMA	AAC32302CMA	
		Price	\$1,286	\$1,413	
	Replacement media (Qty 4) for EarthPure Air Cleaner	Model	AACM42824A	AACM43230A	
		Price	\$139	\$155	
Extended Warranty	Labor Allowance 1	EWOSL4	\$773	\$773	

1 Optional Extended Factory Service Labor Allowance Warranty 6-10 Years

Residential model voltage is 208-230/60/1

If multiple options are selected, combine option list prices, then apply the multiplier.

**Heat Exchanger Selection Notes:**

Air Coils are built standard with Micro-channel coil

**Optional Extended Service Labor Warranty - EWOSL3**

Extends the standard labor warranty of 5 years on all parts to 10 years, including 10 years on all unit parts, thermostats, electric heaters and geothermal pump modules. See ClimateMaster's May 2010 labor allowance schedule and RP852 - ClimateMaster's warranty certificate with extended labor for limitations and details.

## QEHE Variable Capacity Packaged Unit Pricing - Horizontal

QEHE Unit Pricing - Horizontal					
Closed loop w/Internal Flow Controller		Position		QEHE0930	QEHE1860
		1-6		\$14,636	\$17,567
Accessories	Auxiliary / Emergency heater	4 KW	AGM4AAG	\$227	
		5 KW	AGM5AAG	\$300	
		8 KW	AGM8AAG	\$340	
		10 KW	AGM10AAG	\$355	
		10 KW	AGL10AAG		\$371
		15 KW	AGL15AAG		\$588
		20 KW	AGL20AAG		\$641
		Single circuit adapt.	16B0002N02	Single circuit adaptor kit for 15-20 kW heater	
	Web-based, Communicating, Programmable Thermostat	AWC99B01R		\$433	
	Communicating water tank	50 Gallon	AWS050AW1245S	\$2,009	
		85 Gallon	AWS085AW1245S	\$2,421	
		105 Gallon	AWS105AW1245S	\$2,575	
	Secondary drain pan (Qty 10)	ASDPADBS		\$2,073	
		ASDPABBS			\$2,345
Outdoor temp. sensor	AST008		\$54		
Service Tool, Field Diagnostics	ASVCTOOL01		\$206		
EarthPure® Air cleaner	Air cleaner	Model	AAC28242CMA	AAC20422CMA	
		Price	\$1,286	\$1,671	
	Replacement media (Qty 1) for EarthPure Air Cleaner	Model	AACM42824A	AACM42042A	
		Price	\$139	\$155	
Extended Warranty	Labor Allowance 1	EWOSL4	\$773	\$773	

1 Optional Extended Factory Service Labor Allowance Warranty 6-10 Years  
Residential model voltage is 208-230/60/1  
If multiple options are selected, combine option list prices, then apply the multiplier.

### Heat Exchanger Selection Notes:

Air Coils are built standard with Micro-channel coil

### Optional Extended Service Labor Warranty - EWOSL3

Extends the standard labor warranty of 5 years on all parts to 10 years, including 10 years on all unit parts, thermostats, electric heaters and geothermal pump modules. See ClimateMaster's May 2010 labor allowance schedule and RP852 - ClimateMaster's warranty certificate with extended labor for limitations and details.

## QED Variable Capacity Packaged Unit Pricing - Downflow

QED Unit Pricing – Downflow					
Closed loop w/Internal Flow Controller		Position		QED0930	QED1860
		1-6		\$14,636	\$17,567
Accessories	Auxiliary / Emergency heater	4 KW	AGM4AAG	\$227	
		5 KW	AGM5AAG	\$300	
		8 KW	AGM8AAG	\$340	
		10 KW	AGM10AAG	\$355	
		10 KW	AGL10AAG		\$371
		15 KW	AGL15AAG		\$588
		20 KW	AGL20AAG		\$641
		Single circuit adapt.	16B0002N02	Single circuit adaptor kit for 15-20 kW heater	
	Web-based, Communicating, Programmable Thermostat	AWC99B01R		\$433	
	Communicating water tank	50 Gallon	AWS050AW1245S	\$2,009	
		85 Gallon	AWS085AW1245S	\$2,421	
		105 Gallon	AWS105AW1245S	\$2,575	
Outdoor temp. sensor	AST008		\$54		
Service Tool, Field Diagnostics	ASVCTOOL01		\$206		
EarthPure™ Air cleaner	Air cleaner	Model	AAC28242CMA	AAC32302CMA	
		Price	\$1,286	\$1,413	
	Replacement media (Qty 4) for EarthPure Air Cleaner	Model	AACM42824A	AACM43230A	
		Price	\$139	\$155	
Extended Warranty	Labor Allowance 1	EWOSL4	\$773	\$773	

1 Optional Extended Factory Service Labor Allowance Warranty 6-10 Years Residential model voltage is 208-230/60/1  
If multiple options are selected, combine option list prices, then apply the multiplier.

### Heat Exchanger Selection Notes:

Air Coils are built standard with Micro-channel coil

### Optional Extended Service Labor Warranty - EWOSL3

Extends the standard labor warranty of 5 years on all parts to 10 years, including 10 years on all unit parts, thermostats, electric heaters and geothermal pump modules. See ClimateMaster's May 2010 labor allowance schedule and RP852 - ClimateMaster's warranty certificate with extended labor for limitations and details.

## Tranquility® Packaged Units



Tranquility® 20  
and 30 Digital

Tranquility® 22

### ClimateMaster Residential Packaged Unit Features:

ClimateMaster residential units share many of the same innovative features. Specific model features are listed individually by product series.

The following features are standard on all residential units:

#### Appearance

- Best looking unit in the industry:
  - Black textured powder coat painted finish and stainless steel front accent panels
  - Black textured powder coat painted finish and bond silver front panels (Tranquility 22® only)

#### Efficiency

- Up to 30 EER / 4.8 COP efficiency
- vFlow™ Internal Water Flow delivers 70-80% energy savings in part load vs. single-speed flow centers (when IFC is used) (digital models only)
- Designed for efficient operation from 20°F to 120°F entering water temperatures
- Low pressure drop coaxial heat exchangers
- Optional internally mounted hot water generator coil & pump with high limit control ("free" hot water)
- AHRI/ASHRAE/ANSI/ISO 13256-1 certified
- US EPA Energy Star compliant

#### Comfort

- Air handler section fully insulated with foil faced insulation providing cleanability and excellent indoor air quality attributes

#### Quiet

- Double compressor isolation for ultra quiet operation
- Variable-speed ECM (option on TS) fan motor option adjusts to multiple duct system applications and provides soft start for added comfort and low sound levels
- Ultra quiet fully insulated compressor and air handler section

#### Reliability

- iGate™ monitors and protects unit from abnormal operation (digital models only)
- Aluminum micro-channel air coil TE026-049 and tin plated copper tube with aluminum fin on TE064-072
- Anti-short cycle, high & low pressure, loss of charge protection
- Reliable lockout, diagnostic and time delay functions
- Field selectable water coil low temperature cut-out for open or closed loop installations
- Intelligent fault retry
- Condensate overflow protection
- Air coil low temperature cut-out using high accuracy thermistor
- 24vac accessory relays
- UPS (Unit Performance Sentinel) provides early warning of inefficient operating conditions. Fault codes can be displayed at the thermostat if equipped with fault LED or display.
- Stainless steel drain pan for long life
- Run tested to assure maximum efficiency and reliability

### **Tranquility® Packaged Unit Features (Continued):**

- 1" FPT swivel water coax and optional HWG connections
- Internally trapped condensate piping (vertical units)
- Circuit breaker protected 75VA transformer
- Durable galvanized steel cabinet with powder coat paint finish
- AHRI & ETL listed

#### Warranty

- Tranquility® Packaged products are backed with a limited 10-year parts and 5-year labor allowance. The additional optional 5-year labor allowance extends the limited warranty to 10-year parts and 10-year labor allowance.

#### Installation

- vFlow™ internal components reduce installation time (digital models only)
- iGate™ 4-wire connection and electronic configuration reduce installation time (digital models only)
- Independent heating and cooling CFM selection
- Factory-installed deluxe filter rack/duct collar (vertical units)
- Left or right hand return air positions
- Narrow cabinet design for easy movement through doorways
- Internal electric heat (optional) for easy field installation
- Factory installed deluxe 2" filter rack/duct collar with 2" thick high performance MERV 11 replaceable, pleated air filter/factory supplied supply air duct starting collar (1" on Tranquility® 22)

#### Diagnostics

- iGate™ diagnostics on the thermostat (fault condition, possible causes, conditions [temp, flow] at time of fault) set the digital models apart from the competition
- LED fault code and status, fault code memory for easy diagnostics
- CFM display LEDs
- Input status LEDs

## Tranquility® 30 Two-Stage Digital (TE) EarthPure® Geothermal Heat Pumps Upflow - Horizontal Units

The Tranquility® 30 Packaged Geothermal Heat Pump delivers the ULTIMATE in efficiency (30 EER and 4.8 COP\*), comfort, reliability and serviceability – intelligently driven by the industry's first 2-way communicating control, two-stage compressor, variable-speed fan and industry-first vFlow™ internal variable-speed water-flow components, the Tranquility® 30 also delivers reliable operation, lower operating cost and compact installation.

### iGate™ - Digital 2-Way Communicating Controls – Monitor, Configure and Diagnose Digitally

Tranquility® 30 Digital units also break new ground in optimized comfort, efficiency, and serviceability, utilizing industry first and exclusive iGate™ Two-Way Communicating Controls as a standard option with every unit. The digital 2-way communicating controls make installation and service of the system easy and effective by allowing monitoring, configuration and diagnosis of the system on a Communicating Digital Thermostat. Furthermore, 2-way communication between the intelligent components inside the system ensures precise coordination of operation to achieve optimized reliability comfort AND efficiency. A Homeowner can see and give their dealer the fault code and possible causes to help prepare for a service call. Once on the job, a dealer can see what the operating conditions of the unit were at the time of the fault, to help narrow down diagnosis.

### vFlow™ Internal Variable Speed Water-flow Control

ClimateMaster takes ease and speed of installation of geothermal heating and cooling systems to the next level with vFlow™ variable water flow control. vFlow™ integrates water-flow control inside the unit AND takes the guesswork out of setting water-flow. Compared to conventional units that can just turn the water-flow on or off, Tranquility® 30 Digital varies the water-flow, which results in lower operating cost (up to 70-80% in IFC models, part load) and longer system life. New iGate™ communicating control (and communicating Pump / modulating valve) make vFlow™ a reality and only available on ClimateMaster Tranquility® Digital systems.

\* Rated at Ground Loop Conditions ISO 13256-1

## AHRI/ASHRAE/ANSI/ISO 13256-1 Efficiencies:

### Tranquility® 30 Ratings AHRI/ASHRAE/ISO 13256-1 English (IP) Units

ASHRAE/AHRI/ISO 13256-1. English (IP) Units

Model	Capacity Modulation	Water Loop Heat Pump				Ground Water Heat Pump				Ground Loop Heat Pump			
		Cooling 86°F		Heating 68°F		Cooling 59°F		Heating 50°F		Cooling Full Load 77°F Part Load 68°F		Heating Full Load 32°F Part Load 41°F	
		Capacity Btuh	EER Btuh/W	Capacity Btuh	COP	Capacity Btuh	EER Btuh/W	Capacity Btuh	COP	Capacity Btuh	EER Btuh/W	Capacity Btuh	COP
TE026	Part	19,200	19.8	23,600	7.0	22,000	34.1	19,000	5.8	20,800	28.0	16,800	5.0
	Full	25,000	17.4	31,400	6.0	28,500	26.4	25,800	5.3	26,000	19.9	20,200	4.1
TE038	Part	27,400	20.1	32,600	6.5	30,700	34.4	27,300	5.5	29,700	29.6	23,800	4.8
	Full	37,700	17.9	45,700	5.8	42,100	26.1	37,900	5.2	39,000	20.3	29,700	4.4
TE049	Part	36,300	18.8	42,200	6.1	41,800	32.9	34,800	5.0	39,100	27.4	29,800	4.4
	Full	48,600	16.8	56,700	5.1	55,000	25.3	46,800	4.6	49,600	19.3	36,400	4.0
TE064	Part	46,300	18.7	54,700	6.0	53,100	32.4	44,000	5.0	51,200	26.7	38,100	4.4
	Full	61,500	16.2	77,400	5.4	71,500	24.4	63,200	4.8	66,200	18.8	48,700	3.9
TE072	Part	53,000	16.8	64,600	5.2	60,800	28.6	53,200	4.5	58,100	23.2	46,000	3.9
	Full	68,300	15.1	85,300	4.8	77,700	22.5	71,400	4.4	71,700	16.9	55,800	3.7

Ground Loop Heat Pump ratings based on 15% methanol antifreeze solution  
All ratings based upon operation at lower voltage of dual voltage rated models

### Tranquility® 30 Digital Unit Additional Features:

- Two-stage operation with dependable and quiet Copeland UltraTech™ unloading scroll compressor.
- Standard ECM variable speed motor
- Standard iGate™ communicating controls allow configuration, monitoring and diagnostics at the digital thermostat
- Internal Flow Controller Option
- Motorized Valve (modulating) option for closed loop (central pumping) or open loop (with Cupro-nickel coil) applications

	1	2	3	4	5	6	7	8	9	10	11	12	13	14	15
	TE	V	0	2	6	A	G	D	0	2	C	L	T	S	

**SERIES**  
TE = Tranquility® 30 Digital

**CONFIGURATION**  
V = Vertical Up  
H = Horizontal  
D = Down Flow

**UNIT SIZE**  
026  
038  
049  
064  
072

**REVISION LEVEL**  
B = Current Revision

**VOLTAGE**  
G = 208-230/60/1 Ⓢ

**CONTROLS**  
D = DXM2  
B = DXM2 w/Disconnect  
4 = DXM2 w/SecureStart

**STANDARD**  
S = Standard

**SUPPLY AIR FLOW & MOTOR CONFIGURATION**

	Supply	Configuration
T	Top	TEV
B	Back	TEH
S	Straight	TEH
D	Down	TED

**RETURN AIR FLOW CONFIGURATION**  
L = Left Return w/ 2" Merv 11 pleated filter and frame  
R = Right Return w/ 2" Merv 11 pleated filter and frame

**HEAT EXCHANGER OPTIONS**

	Copper	Cupro-Nickel
HWG W/Pump (Standard)	C	N
No HWG	A	J

**WATER CIRCUIT OPTIONS**  
0 = None  
1 = Internal Flow Controller Standard Head – Closed Loop (available for unit sizes 026 and 038 only)  
2 = Internal Flow Controller High Head - Closed Loop  
5 = Motorized Modulating Valve (Central Pumping Applications) - Closed Loop  
6 = Motorized Modulating Valve (Ground Water Applications) - Open Loop

**CABINET**  
0 = Residential

In Position 11 and 12, only the following combinations are available:

With HWG	Without HWG	Description
1C	1A	Internal Flow Controller Standard Head with Copper Water Coil
2C	2A	Internal Flow Controller High Head with Copper Water Coil
5C	5A	Motorized Modulating Valve with Copper Water Coil
6N	6J	Motorized Modulating Valve with Cupro-Nickel Water Coil
0C	0A	No vFlow with Copper Water Coil
0N	0J	No vFlow with Cupro-Nickel Water Coil

## TEV 2-Stage Digital Packaged Unit Pricing - Vertical

TEV Two-Stage Packaged Unit Pricing							
Base unit w/HWG		Position	TEV026	TEV038	TEV049	TEV064	TEV072
Pick one	Closed loop w/IFC, std head	11-12	\$9,546	\$10,444	N/A	N/A	N/A
	Closed loop w/IFC, high head	11-12	\$9,804	\$10,702	\$11,781	\$12,749	\$13,090
	Closed loop w/mod valve, central pumping	11-12	\$8,317	\$9,152	\$10,060	\$11,113	\$11,455
	Open loop w/mod valve, CN Coil	11-12	\$8,688	\$9,522	\$10,608	\$11,700	\$12,042
	Closed loop w/o vFlow	11-12	\$8,272	\$9,092	\$9,991	\$10,985	\$11,326
	Open loop w/o vFlow	11-12	\$8,643	\$9,463	\$10,539	\$11,572	\$11,913
Additional options	DXM2 w/Disconnect	9	\$185	\$227	\$227	\$227	\$227
	DXM2 w/Secure Start	9	\$489	\$489	\$489	\$489	\$489
	Remove Hot Water Gen.	12	(\$638)	(\$638)	(\$638)	(\$638)	(\$638)
Accessories	Auxiliary / Emergency heater	4 KW	AGM4AAG	\$227			
		5 KW	AGM5AAG	\$300			
		8 KW	AGM8AAG	\$340			
		10 KW	AGM10AAG	\$355			
		10 KW	AGL10AAG		\$371	\$371	\$371
		15 KW	AGL15AAG		\$588	\$588	\$588
		20 KW	AGL20AAG			\$641	\$641
		Single circuit adapt.	16B0002N02	Single circuit adaptor kit for 12-20 kW heater			
	Communicating, Programmable Thermostat	ATC32U02	\$373	\$373	\$373	\$373	
	Configuration / Diagnostic Tool	ACDU02	\$439	\$439	\$439	\$439	
	Outdoor temp. sensor	AST008	\$54	\$54	\$54	\$54	
	Anti Scald Valve1	AVAS4	\$180	\$180	\$180	\$180	
	Secure Start compressor soft start kit	13B0045N01	\$455	\$455	\$455	\$455	
	Unit pad (Qty 5)	AUQSP2427	\$413				
		AUQSP2732		\$595	\$595	\$595	
Packaged unit stand (Qty 4)	ACSVAMBS	\$1,273					
	ACSVALBS		\$1,535	\$1,535	\$1,535		
EarthPure® Air cleaner	Air cleaner	Model	AAC28242CMA	AAC28302CMA	AAC32302CMA	AAC36302CMA	AAC36302CMA
		Price	\$1,286	\$1,286	\$1,413	\$1,413	\$1,413
	Replacement media (Qty 4) for EarthPure Air Cleaner	Model	AACM42824A	AACM42830A	AACM43230A	AACM43630A	AACM43630A
		Price	\$139	\$139	\$155	\$155	\$155
Extended Warranty	Labor Allowance3	EWOSL3	\$515	\$515	\$515	\$515	

1 - HWG setpoint = 150 deg F

3 - Optional Extended Factory Service Labor Allowance Warranty 6-10 Years

Residential model voltage is 208-230/60/1

\*If multiple options are selected, combine option list prices, then apply the multiplier

### Heat Exchanger Selection Notes:

Air Coils are all aluminum microchannel (026–049) and tin plated copper tube with aluminum fin (064–072)

Closed Loop Applications - use copper water coil

Well Water/Open Loop Applications - water quality & quantity test recommended, see water quality standards table in the Installation Manual.

Cupro-Nickel water coil NOT available with Internal Flow Controller Option

### Water Circuit Selection Notes:

Units with Standard Head pumps should not be combined with High Head pumps on the same loop. Standard Head units are best suited for small applications with a single geothermal heat pump.

### Optional Extended Service Labor Warranty - EWOSL3

Extends the standard labor warranty of 5 years on all parts to 10 years, including 10 years on all unit parts, thermostats, electric heaters and geothermal pump modules. See ClimateMaster's May 2010 labor allowance schedule and RP852 - ClimateMaster's warranty certificate with extended labor for limitations and details.

## TEH 2-Stage Digital Packaged Unit Pricing - Horizontal

TEH Two-Stage Packaged Unit Pricing							
Base unit w/HWG		Position	TEH026	TEH038	TEH049	TEH064	TEH072
Pick one	Closed loop w/IFC, std head	11-12	\$9,546	\$10,444	N/A	N/A	N/A
	Closed loop w/IFC, high head	11-12	\$9,804	\$10,702	\$11,781	\$12,749	\$13,090
	Closed loop w/mod valve, central pumping	11-12	\$8,317	\$9,152	\$10,060	\$11,113	\$11,455
	Open loop w/mod valve, CN Coil	11-12	\$8,688	\$9,522	\$10,608	\$11,700	\$12,042
	Closed loop w/o vFlow	11-12	\$8,272	\$9,092	\$9,991	\$10,985	\$11,326
	Open loop w/o vFlow	11-12	\$8,643	\$9,463	\$10,539	\$11,572	\$11,913
Additional options	DXM2 w/Disconnect	9	\$185	\$227	\$227	\$227	\$227
	DXM2 w/Secure Start	9	\$489	\$489	\$489	\$489	\$489
	Remove Hot Water Gen.	12	(\$638)	(\$638)	(\$638)	(\$638)	(\$638)
Accessories	Auxiliary / Emergency heater	4 KW AGM4AAG	\$227				
		5 KW AGM5AAG	\$300				
		8 KW AGM8AAG	\$340				
		10 KW AGM10AAG	\$355				
		10 KW AGL10AAG		\$371	\$371	\$371	\$371
		15 KW AGL15AAG		\$588	\$588	\$588	\$588
		20 KW AGL20AAG		\$641	\$641	\$641	\$641
	Single circuit adapt.	16B0002N02	Single circuit adaptor kit for 12-20 kW heater				
	Communicating, Programmable Thermostat	ATC32U02	\$373	\$373	\$373	\$373	\$373
	Configuration / Diagnostic Tool	ACDU02	\$439	\$439	\$439	\$439	\$439
	Outdoor temp. sensor	AST008	\$54	\$54	\$54	\$54	\$54
	Anti Scald Valve1	AVAS4	\$180	\$180	\$180	\$180	\$180
	Secure Start compressor soft start kit	13B0045N01	\$455	\$455	\$455	\$455	\$455
	Secondary drain pan (Qty 10)	ASDPADBS	\$2,073				
ASDPACBS			\$2,126				
ASDPABBS				\$2,345			
ASDPAABS					\$2,400	\$2,400	
EarthPure® Air cleaner	Air cleaner	Model	AAC18362CMA	AAC20372CMA	AAC20422CMA	AAC20482CMA	AAC20482CMA
		Price	\$1,413	\$1,413	\$1,671	\$1,671	\$1,671
	Replacement media (Qty 4) for EarthPure Air Cleaner	Model	AACM41836A	AACM42037A	AACM42042A	AACM42048A	AACM42048A
		Price	\$155	\$155	\$155	\$155	\$155
Extended Warranty	Labor Allowance3	EWOSL3	\$515	\$515	\$515	\$515	\$515

1 - HWG setpoint = 150 deg F  
3 - Optional Extended Factory Service Labor Allowance Warranty 6-10 Years

Residential model voltage is 208-230/60/1  
\*If multiple options are selected, combine option list prices, then apply the multiplier

### Heat Exchanger Selection Notes:

Air Coils are all aluminum microchannel (026-049) and tin plated copper tube with aluminum fin (064-072)  
Closed Loop Applications - use copper water coil  
Well Water/Open Loop Applications - water quality & quantity test recommended, see water quality standards table in the Installation Manual.

Cupro-Nickel water coil NOT available with Internal Flow Controller Option

### Water Circuit Selection Notes:

Units with Standard Head pumps should not be combined with High Head pumps on the same loop. Standard Head units are best suited for small applications with a single geothermal heat pump.

### Optional Extended Service Labor Warranty - EWOSL3

Extends the standard labor warranty of 5 years on all parts to 10 years, including 10 years on all unit parts, thermostats, electric heaters and geothermal pump modules. See ClimateMaster's May 2010 labor allowance schedule and RP852 - ClimateMaster's warranty certificate with extended labor for limitations and details.

## TED 2-Stage Digital Packaged Unit Pricing - Downflow

TED Two-Stage Packaged Unit Pricing								
Base unit w/HWG		Position	TED026	TED038	TED049	TED064	TED072	
Pick one	Closed loop w/IFC, std head	11-12	\$9,546	\$10,444	N/A	N/A	N/A	
	Closed loop w/IFC, high head	11-12	\$9,804	\$10,702	\$11,781	\$12,749	\$13,090	
	Closed loop w/mod valve, central pumping	11-12	\$8,317	\$9,152	\$10,060	\$11,113	\$11,455	
	Open loop w/mod valve, CN Coil	11-12	\$8,688	\$9,522	\$10,608	\$11,700	\$12,042	
	Closed loop w/o vFlow	11-12	\$8,272	\$9,092	\$9,991	\$10,985	\$11,326	
	Open loop w/o vFlow	11-12	\$8,643	\$9,463	\$10,539	\$11,572	\$11,913	
Additional options	DXM2 w/Disconnect	9	\$185	\$227	\$227	\$227	\$227	
	DXM2 w/Secure Start	9	\$489	\$489	\$489	\$489	\$489	
	Remove Hot Water Gen.	12	(\$638)	(\$638)	(\$638)	(\$638)	(\$638)	
Accessories	Auxiliary / Emergency heater	4 KW	AGM4AAG	\$227				
		5 KW	AGM5AAG	\$300				
		8 KW	AGM8AAG	\$340				
		10 KW	AGM10AAG	\$355				
		10 KW	AGL10AAG		\$371	\$371	\$371	\$371
		15 KW	AGL15AAG		\$588	\$588	\$588	\$588
		20 KW	AGL20AAG			\$641	\$641	\$641
	Single circuit adapt.	16B0002N02	Single circuit adaptor kit for 12-20 kW heater					
	Communicating, Programmable Thermostat	ATC32U02	\$373	\$373	\$373	\$373	\$373	
	Configuration / Diagnostic Tool	ACDU02	\$439	\$439	\$439	\$439	\$439	
	Outdoor temp. sensor	AST008	\$54	\$54	\$54	\$54	\$54	
Anti Scald Valve 1	AVAS4	\$180	\$180	\$180	\$180	\$180		
Secure Start compressor soft start kit	13B0045N01	\$455	\$455	\$455	\$455	\$455		
EarthPure® Air cleaner	Air cleaner	Model	AAC28242CMA	AAC28302CMA	AAC32302CMA	AAC36302CMA	AAC36302CMA	
		Price	\$1,286	\$1,286	\$1,413	\$1,413	\$1,413	
	Replacement media (Qty 4) for EarthPure Air Cleaner	Model	AACM42824A	AACM42830A	AACM43230A	AACM43630A	AACM43630A	
		Price	\$139	\$139	\$155	\$155	\$155	
Extended Warranty	Labor Allowance3	EWOSL3	\$515	\$515	\$515	\$515	\$515	

1 - HWG setpoint = 150 deg F

3 - Optional Extended Factory Service Labor Allowance Warranty 6-10 Years

Residential model voltage is 208-230/60/1

\*If multiple options are selected, combine option list prices, then apply the multiplier

### Heat Exchanger Selection Notes:

Air Coils are all aluminum microchannel (026-049) and tin plated copper tube with aluminum fin (064-072)

Closed Loop Applications - use copper water coil

Well Water/Open Loop Applications - water quality & quantity test recommended, see water quality standards table in the Installation Manual.

Cupro-Nickel water coil NOT available with Internal Flow Controller Option

### Water Circuit Selection Notes:

Units with Standard Head pumps should not be combined with High Head pumps on the same loop. Standard Head units are best suited for small applications with a single geothermal heat pump.

### Optional Extended Service Labor Warranty - EWOSL3

Extends the standard labor warranty of 5 years on all parts to 10 years, including 10 years on all unit parts, thermostats, electric heaters and geothermal pump modules. See ClimateMaster's May 2010 labor allowance schedule and RP852 - ClimateMaster's warranty certificate with extended labor for limitations and details.

## Tranquility® 22 Two Stage Digital (TZ) EarthPure® Geothermal Heat Pumps Upflow - Horizontal Units

The Tranquility® 22 Digital is a game-changing new geothermal heat pump that integrates digital communicating controls, two-stage capacity, variable-speed fan and variable-flow geothermal source functions within a single compact "vFlow™" package. Delivering Two Stage

comfort at single stage price point, this innovative product line has been specifically designed and developed for price sensitive, and many times space limited, new home construction and replacement/retrofit applications.

### AHRI/ASHRAE/ANSI/ISO 13256-1 Efficiencies:

### Tranquility® 22 Ratings AHRI/ASHRAE/ISO 13256-1 English (IP) Units

Model	Capacity Modulation	Water Loop Heat Pump				Ground Water Heat Pump				Ground Loop Heat Pump			
		Cooling 86°F		Heating 68°F		Cooling 59°F		Heating 50°F		Cooling Full Load 77°F Part Load 68°F		Heating Full Load 32°F Part Load 41°F	
		Capacity Btuh	EER Btuh/W	Capacity Btuh	COP	Capacity Btuh	EER Btuh/W	Capacity Btuh	COP	Capacity Btuh	EER Btuh/W	Capacity Btuh	COP
024	Part	18,100	16.1	20,600	5.2	20,300	27.2	16,700	4.4	19,400	22.2	14,700	4.0
	Full	23,700	14.3	28,000	4.6	26,500	21.7	23,000	4.1	24,600	16.0	17,800	3.6
030	Part	21,900	15.2	26,300	5.0	24,900	24.8	22,000	4.3	24,200	20.9	19,400	3.9
	Full	28,500	14.0	35,800	4.6	32,300	20.7	30,000	4.2	29,900	15.7	23,800	3.6
036	Part	25,800	17.2	29,900	5.3	29,000	29.4	24,900	4.6	27,300	23.4	21,500	4.0
	Full	34,300	15.1	42,000	4.6	38,200	22.3	35,100	4.3	35,200	16.7	27,300	3.6
042	Part	31,000	15.8	36,800	5.1	35,200	26.4	30,500	4.3	34,000	22.0	26,900	3.8
	Full	41,100	14.3	50,200	4.6	46,300	21.3	42,300	4.1	43,100	16.1	33,300	3.4
048	Part	34,100	15.2	39,500	5.5	39,200	26.8	32,600	4.6	37,600	21.2	29,200	4.1
	Full	45,900	14.0	53,800	4.9	51,800	20.9	45,000	4.4	48,150	15.5	35,600	3.7
060	Part	45,500	17.7	49,000	5.3	50,400	28.9	39,800	4.5	48,600	23.7	34,800	4.0
	Full	61,700	15.7	67,500	4.8	68,000	22.7	55,400	4.3	63,200	17.3	43,700	3.6

Ground Loop Heat Pump ratings based on 15% methanol antifreeze solution  
All ratings based upon operation at lower voltage of dual voltage rated models

### Tranquility® 22 Unit Additional Features:

- Two-stage operation with dependable and quiet Copeland UltraTech™ unloading scroll compressor.
- Standard ECM variable speed motor
- Standard communicating controls allow configuration, monitoring and diagnostics at the digital thermostat
- Internal Flow Controller Option
- Motorized Valve (modulating) option for closed loop (central pumping) or open loop (with Cupro-nickel coil) applications

1 2 3 4 5 6 7 8 9 10 11 12 13 14 15

TZ V 024 B G D 0 2 C L T S

**SERIES**  
TZ = Tranquility® 22 Digital

**CONFIGURATION**  
V = Vertical Up  
H = Horizontal

**UNIT SIZE**  
024, 030, 036, 042, 048, 060

**REVISION LEVEL**  
A = Current Revision for 030, 042, 048  
B = Current Revision for 024, 036, 060

**VOLTAGE**  
G = 208-230/60/1

**CONTROLS**  
D = DXM2

**CABINET**  
0 = Residential

**STANDARD**  
S = Standard

**SUPPLY AIR FLOW & MOTOR CONFIGURATION**

	Supply	Configuration	Motor
T	Top	TZV	ECM
B	Back	TZH	ECM
S	Straight	TZH	ECM

**RETURN AIR FLOW CONFIGURATION**  
L = Left Return w/ 1" Merv 8 pleated filter and frame  
R = Right Return w/ 1" Merv 8 pleated filter and frame

**HEAT EXCHANGER OPTIONS**

	Tin Plated Air Coil	
	Copper	Cupro-Nickel
HWG W/Pump (Standard)	C	N
No HWG	A	J

**WATER CIRCUIT OPTIONS**  
0 = None  
2 = Magna Internal Flow Controller - Closed Loop  
5 = Motorized Modulating Valve (Central Pumping Applications) - Closed Loop  
6 = Motorized Valve (Modulating) Open Loop Applications, High System Pressure Drop

In Position 11 and 12, only the following combinations are available:

With HWG	Without HWG	Description
2C	2A	Internal Flow Controller with Copper Water Coil
5C	5A	Motorized Modulating Valve with Copper Water Coil
6N	6J	Motorized Modulating Valve with Cupro-Nickel Water Coil
0C	0A	No vFlow™ with Copper Water Coil
0N	0J	No vFlow™ with Cupro-Nickel Water Coil

## TZV 2-Stage Digital Packaged Unit Pricing - Vertical

TZV Two-Stage Packaged Unit Pricing									
Base unit w/HWG		Position		TZV024	TZV030	TZV036	TZV042	TZV048	TZV60
Pick one	Closed loop w/IFC, std head	11-12		\$7,455	\$7,489	\$7,923	N/A	N/A	N/A
	Closed loop w/IFC, high head	11-12		\$7,713	\$7,747	\$8,180	\$8,569	\$8,983	\$9,553
	Closed loop w/mod valve, central pumping	11-12		\$6,226	\$6,260	\$6,630	\$7,018	\$7,262	\$7,917
	Open loop w/mod valve, CN Coil	11-12		\$6,302	\$6,331	\$6,700	\$7,329	\$7,596	\$8,299
	Closed loop w/o vFlow	11-12		\$6,181	\$6,215	\$6,570	\$6,959	\$7,192	\$7,789
	Open loop w/o vFlow	11-12		\$6,256	\$6,286	\$6,640	\$7,270	\$7,527	\$8,171
Additional options	Remove Hot Water Gen.	12		(\$638)	(\$638)	(\$638)	(\$638)	(\$638)	(\$638)
Accessories	Auxiliary / Emergency heater	4 KW	AGM4AAG	\$227	\$227	\$227	\$227		
		5 KW	AGM5AAG	\$300	\$300	\$300	\$300		
		8 KW	AGM8AAG	\$340	\$340	\$340	\$340		
		10 KW	AGM10AAG	\$355	\$355	\$355	\$355		
		12 KW	AGM12AAG		\$505	\$505	\$505		
		10 KW	AGL10AAG					\$371	\$371
		15 KW	AGL15AAG					\$588	\$588
		20 KW	AGL20AAG					\$641	\$641
		Single circuit adapt.	16B0002N02	Single circuit adaptor kit for 12-20 kW heater					
	Communicating, Programmable Thermostat	ATC32U02		\$373	\$373	\$373	\$373	\$373	\$373
	Configuration / Diagnostic Tool	ACDU02		\$439	\$439	\$439	\$439	\$439	\$439
	Outdoor temp. sensor	AST008		\$54	\$54	\$54	\$54	\$54	\$54
	Anti Scald Valve1	AVAS4		\$180	\$180	\$180	\$180	\$180	\$180
Secure Start compressor soft start kit	13B0045N01		\$455	\$455	\$455	\$455	\$455	\$455	
Unit pad (Qty 5)	AUGSP2424		\$330	\$330					
	AUGSP2427		\$413	\$413					
	AUGSP2732				\$595	\$595	\$595	\$595	
Extended Warranty	Labor Allowance3	EWOSL3		\$515	\$515	\$515	\$515	\$515	\$515

1 - HWG setpoint = 150 deg F

3 - Optional Extended Factory Service Labor Allowance Warranty 6-10 Years

Residential model voltage is 208-230/60/1

\*If multiple options are selected, combine option list prices, then apply the multiplier

### Heat Exchanger Selection Notes:

Air Coils are built standard with tin plating in Residential Models

Closed Loop Applications - use copper water coil

Well Water/Open Loop Applications - water quality & quantity test recommended, see water quality standards table in the Installation Manual.

Cupro-Nickel water coil NOT available with Internal Flow Controller Option

### Optional Extended Service Labor Warranty - EWOSL3

Extends the standard labor warranty of 5 years on all parts to 10 years, including 10 years on all unit parts, thermostats, electric heaters and geothermal pump modules. See ClimateMaster's May 2010 labor allowance schedule and RP852 - ClimateMaster's warranty certificate with extended labor for limitations and details.

## TZH 2-Stage Digital Packaged Unit Pricing - Horizontal

TZV Two-Stage Packaged Unit Pricing										
Base unit w/HWG		Position		TZV024	TZV030	TZV036	TZV042	TZV048	TZV60	
Pick one	Closed loop w/IFC, std head	11-12		\$7,455	\$7,489	\$7,923	N/A	N/A	N/A	
	Closed loop w/IFC, high head	11-12		\$7,713	\$7,747	\$8,180	\$8,569	\$8,983	\$9,553	
	Closed loop w/mod valve, central pumping	11-12		\$6,226	\$6,260	\$6,630	\$7,018	\$7,262	\$7,917	
	Open loop w/mod valve, CN Coil	11-12		\$6,302	\$6,331	\$6,700	\$7,329	\$7,596	\$8,299	
	Closed loop w/o vFlow	11-12		\$6,181	\$6,215	\$6,570	\$6,959	\$7,192	\$7,789	
	Open loop w/o vFlow	11-12		\$6,256	\$6,286	\$6,640	\$7,270	\$7,527	\$8,171	
Additional options	Remove Hot Water Gen.	12		(\$638)	(\$638)	(\$638)	(\$638)	(\$638)	(\$638)	
Accessories	Auxiliary / Emergency heater	4 KW	AGM4AAG	\$227	\$227	\$227	\$227			
		5 KW	AGM5AAG	\$300	\$300	\$300	\$300			
		8 KW	AGM8AAG	\$340	\$340	\$340	\$340			
		10 KW	AGM10AAG	\$355	\$355	\$355	\$355			
		12 KW	AGM12AAG		\$505	\$505	\$505			
		10 KW	AGL10AAG					\$371	\$371	
		15 KW	AGL15AAG					\$588	\$588	
		20 KW	AGL20AAG					\$641	\$641	
	Single circuit adapt.	16B0002N02	Single circuit adaptor kit for 12-20 kW heater							
	Communicating, Programmable Thermostat	ATC32U02		\$373	\$373	\$373	\$373	\$373	\$373	
	Configuration / Diagnostic Tool	ACDU02		\$439	\$439	\$439	\$439	\$439	\$439	
	Outdoor temp. sensor	AST008		\$54	\$54	\$54	\$54	\$54	\$54	
	Anti Scald Valve 1	AVAS4		\$180	\$180	\$180	\$180	\$180	\$180	
	Secure Start compressor soft start kit	13B0045N01		\$455	\$455	\$455	\$455	\$455	\$455	
Unit pad (Qty 5)	AUGSP2424		\$330	\$330						
	AUGSP2427		\$413	\$413						
	AUGSP2732				\$595	\$595	\$595	\$595		
Extended Warranty	Labor Allowance3	EWOSL3		\$515	\$515	\$515	\$515	\$515		

1 - HWG setpoint = 150 deg F

3 - Optional Extended Factory Service Labor Allowance Warranty 6-10 Years

Residential model voltage is 208-230/60/1

\*If multiple options are selected, combine option list prices, then apply the multiplier

### Heat Exchanger Selection Notes:

Air Coils are built standard with tin plating in Residential Models

Closed Loop Applications - use copper water coil

Well Water/Open Loop Applications - water quality & quantity test recommended, see water quality standards table in the Installation Manual.

Cupro-Nickel water coil NOT available with Internal Flow Controller Option

### Optional Extended Service Labor Warranty - EWOSL3

Extends the standard labor warranty of 5 years on all parts to 10 years, including 10 years on all unit parts, thermostats, electric heaters and geothermal pump modules. See ClimateMaster's May 2010 labor allowance schedule and RP852 - ClimateMaster's warranty certificate with extended labor for limitations and details.

## Tranquility® 20 Single-Stage (TS) EarthPure® Geothermal Heat Pumps Upflow - Horizontal - Downflow Units Series

### AHRI/ASHRAE/ANSI/ISO 13256-1 Efficiencies:

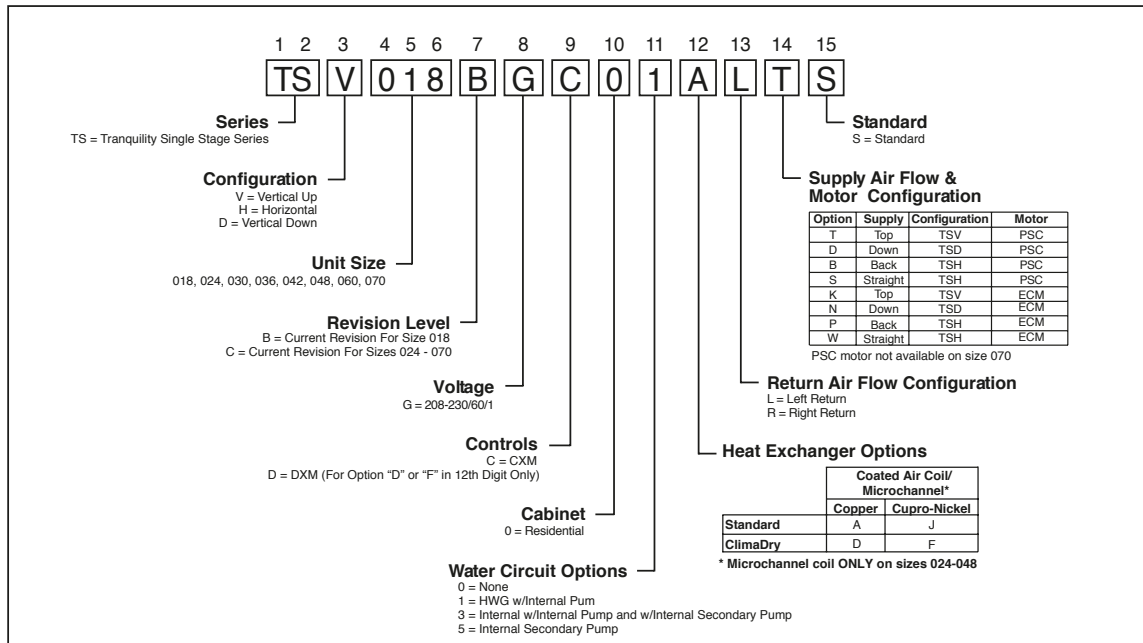
### Tranquility® 20 Ratings AHRI/ASHRAE/ISO 13256-1 English (IP) Units

Model	Fan Motor	Water Loop Heat Pump				Ground Water Heat Pump				Ground Loop Heat Pump			
		Cooling 86°F		Heating 68°F		Cooling 59°F		Heating 50°F		Cooling 77°F		Heating 32°F	
		Capacity Btuh	EER Btuh/W	Capacity Btuh	COP	Capacity Btuh	EER Btuh/W	Capacity Btuh	COP	Capacity Btuh	EER Btuh/W	Capacity Btuh	COP
TS018	PSC	18,600	15.0	23,000	5.2	21,300	24.8	18,800	4.5	19,500	18.4	14,500	3.6
	ECM	19,200	16.5	23,300	5.9	22,100	26.3	18,900	4.9	20,200	19.4	14,500	3.9
TS024	PSC	23,800	16.9	30,800	5.9	26,500	26.4	24,100	5.0	25,300	18.9	19,200	4.0
	ECM	23,900	17.9	30,400	6.1	26,900	28.5	23,800	5.2	25,500	20.9	19,100	4.2
TS030	PSC	28,000	16.3	35,500	5.5	31,000	24.9	28,400	4.7	29,200	18.5	22,200	3.9
	ECM	28,000	17.3	35,100	5.8	30,800	26.7	28,000	4.9	29,200	19.4	22,000	4.1
TS036	PSC	33,400	17.0	40,400	5.6	35,400	23.2	33,200	4.7	34,300	19.2	25,900	4.1
	ECM	33,500	18.1	39,900	5.9	35,400	24.9	32,600	4.9	34,600	20.4	25,600	4.3
TS042	PSC	38,500	17.2	46,300	5.6	43,700	25.4	36,200	4.7	40,100	19.4	28,700	3.8
	ECM	39,400	19.6	45,100	6.0	44,400	29.5	35,200	5.2	40,700	21.9	27,400	4.1
TS048	PSC	47,100	14.8	58,000	4.7	53,600	21.3	47,500	4.0	49,600	16.8	36,600	3.4
	ECM	48,900	17.2	57,700	5.2	53,700	23.9	45,700	4.4	50,600	18.8	36,100	3.7
TS060	PSC	62,400	15.9	73,900	5.0	68,500	23.1	58,200	4.2	63,900	17.2	46,900	3.7
	ECM	63,200	17.2	73,200	5.4	68,900	24.9	58,200	4.6	64,400	18.4	46,400	3.9
TS070	ECM	71,100	15.7	82,100	4.6	78,000	21.1	66,100	4.0	72,900	16.2	53,800	3.4

Cooling capacities based upon 80.6°F DB, 66.2°F WB entering air temperature  
 Heating capacities based upon 68°F DB, 59°F WB entering air temperature  
 All ratings based upon operation at lower voltage of dual voltage rated models

### Tranquility® 20 Unit Additional Features:

- Highest efficiency single stage heat pump available in the Industry
- Single-stage operation with dependable and quiet Copeland scroll compressor
- Standard with PSC fan motor; optional ECM variable speed motor
- Black textured powder coat painted finish and stainless steel front accent panels



### TSV Single Stage Packaged Unit Pricing

TSV Single Stage Packaged Unit Pricing				Vertical Packaged Unit							
Base unit w/HWG		Position	TSV018	TSV024	TSV030	TSV036	TSV042	TSV048	TSV60	TSV70 ***	
		1-6	\$6,302	\$6,534	\$6,760	\$7,130	\$8,245	\$8,387	\$9,325	\$9,755	
Additional options	Cupro-Nickel Coil	12	\$215	\$371	\$371	\$371	\$548	\$548	\$587	\$587	
	ClimaDry® - Cupro-Nickel Coil	12	\$2,769	\$2,769	\$2,793	\$2,793	\$2,868	\$2,868	\$3,032	\$3,032	
	ClimaDry® - Copper Coil	12	\$2,555	\$2,555	\$2,580	\$2,580	\$2,641	\$2,641	\$2,806	\$2,806	
	Internal Second. pump1	11	\$231	\$231	\$231	\$288	\$288	\$288	\$288	\$288	
	ECM2 Blower Motor	14	\$769	\$769	\$769	\$769	\$769	\$923	\$923	\$923	
	Remove Hot Water Gen.	11	(\$638)	(\$638)	(\$638)	(\$638)	(\$638)	(\$638)	(\$638)	(\$638)	
Accessories	Auxiliary / Emergency heater	4 KW	AGM4AAG	\$227	\$227	\$227					
		5 KW	AGM5AAG	\$300	\$300	\$300					
		8 KW	AGM8AAG		\$340	\$340					
		10 KW	AGM10AAG		\$355	\$355					
		10 KW	AGL10AAG				\$371	\$371	\$371	\$371	\$371
		15 KW	AGL15AAG				\$588	\$588	\$588	\$588	\$588
		20 KW	AGL20AAG					\$641	\$641	\$641	\$641
		Single circuit adapt.	16B0002N02	Single circuit adaptor kit for 12-20 kW heater							
	Thermostats	w/o Climadry with ECM motor	ATP32U03	\$317	\$317	\$317	\$317	\$317	\$317	\$317	\$317
		W/Climadry	ATP32U04	\$373	\$373	\$373	\$373	\$373	\$373	\$373	\$373
			ATA22U01	\$75	\$75	\$75	\$75	\$75	\$75	\$75	\$75
		Outdoor temp. sensor	AST008	\$54	\$54	\$54	\$54	\$54	\$54	\$54	\$54
		Anti Scald Valve2	AVAS4	\$180	\$180	\$180	\$180	\$180	\$180	\$180	\$180
		ClimaDry Potentiometer Kit	S17S0018N01	\$92	\$92	\$92	\$92	\$92	\$92	\$92	\$92
		Accessory Pump Slaving Module3	APSM	\$85	\$85	\$85	\$85	\$85	\$85	\$85	\$85
		Secure Start compressor soft start kit	13B0045N01	\$455	\$455	\$455	\$455	\$455	\$455	\$455	\$455
		Unit pad (Qty 5)	AUQSP2427	\$413	\$413	\$413					
			AUQSP2732				\$595	\$595	\$595	\$595	\$595
		Packaged unit stand (Qty 4)	ACSVAMBS	\$1,273	\$1,273	\$1,273					
			ACSVALBS				\$1,535	\$1,535	\$1,535	\$1,535	\$1,535
EarthPure® Air cleaner	Air cleaner	Model	AAC24242CMA	AAC28242CMA	AAC28242CMA	AAC28302CMA	AAC32302CMA	AAC32302CMA	AAC36302CMA	AAC36302CMA	
		Price	\$1,286	\$1,286	\$1,286	\$1,286	\$1,413	\$1,413	\$1,413	\$1,413	
	Replacement media (Qty 4) for EarthPure Air Cleaner	Model	AACM4242A	AACM4282A	AACM4282A	AACM42830A	AACM43230A	AACM43230A	AACM43630A	AACM43630A	
		Price	\$139	\$139	\$139	\$139	\$155	\$155	\$155	\$155	
Motor Upgrade	PSC to ECM 2 Blower Motor Upgrade Kits	Model	EUKTS018**	EUKTS024*	EUKTS030*	EUKTS036**	EUKTS042**	EUKTS048**	EUKTS060	EUKTS070	
		Price	\$936	\$857	\$857	\$1,049	\$1,049	\$1,220	\$987	\$987	
Extended Warranty	Labor Allowance4	EWOSL3	\$515	\$515	\$515	\$515	\$515	\$515	\$515	\$515	

- 1 - Not available with ClimaDry
- 2 - HWG setpoint = 150 deg F
- 3 - 1 Flow Controller - 2 units
- 4 - Optional Extended Factory Service Labor Allowance Warranty 6-10 Years

\* Kit contains a motor belly band  
 \*\* Kit contains a blower housing and a motor belly band  
 \*\*\* TS070 Not Available with PSC; Add ECM

#### Heat Exchanger Selection Notes:

Air Coils are built standard with tin plating in Residential Models - 018, 060, 070 Models  
 Micro-channel Air Coils are standard in Residential Models - 024-048 Models  
 Closed Loop Applications - use copper water coil  
 Well Water/Open Loop Applications - water quality & quantity test recommended, see water quality standards table in the Installation Manual.

#### Optional Extended Service Labor Warranty - EWOSL3

Extends the standard labor warranty of 5 years on all parts to 10 years, including 10 years on all unit parts, thermostats, electric heaters and geothermal pump modules. See ClimateMaster's May 2010 labor allowance schedule and RP852 - ClimateMaster's warranty certificate with extended labor for limitations and details.

Residential model voltage is 208-230/60/1  
 \*If multiple options are selected, combine option list prices, then apply the multiplier  
 DXM controls required for ClimaDry Reheat option.

## TSH Single Stage Packaged Unit Pricing - Horizontal

TSH single stage packaged unit pricing - Horizontal				Horizontal Packaged Unit							
Base unit w/HWG		Position	TSH018	TSH024	TSH030	TSH036	TSH042	TSH048	TSH060	TSH070 ***	
		1-6	\$6,302	\$6,534	\$6,760	\$7,130	\$8,245	\$8,387	\$9,325	\$9,755	
Additional options	Cupro-Nickel Coil	12	\$215	\$371	\$371	\$371	\$548	\$548	\$587	\$587	
	ClimaDry® - Cupro-Nickel Coil	12	\$2,769	\$2,769	\$2,793	\$2,793	\$2,868	\$2,868	\$3,032	\$3,032	
	ClimaDry® - Copper Coil	12	\$2,555	\$2,555	\$2,580	\$2,580	\$2,641	\$2,641	\$2,806	\$2,806	
	Internal Second. pump 1	11	\$231	\$231	\$231	\$288	\$288	\$288	\$288	\$288	
	ECM2 Blower Motor	14	\$769	\$769	\$769	\$769	\$769	\$923	\$923	\$923	
	Remove Hot Water Gen.	11	(\$638)	(\$638)	(\$638)	(\$638)	(\$638)	(\$638)	(\$638)	(\$638)	
Accessories	Auxiliary / Emergency heater	4 KW AGM4AAG	\$227	\$227	\$227						
		5 KW AGM5AAG	\$300	\$300	\$300						
		8 KW AGM8AAG		\$340	\$340						
		10 KW AGM10AAG		\$355	\$355						
		10 KW AGL10AAG				\$371	\$371	\$371	\$371	\$371	
		15 KW AGL15AAG				\$588	\$588	\$588	\$588	\$588	
		20 KW AGL20AAG					\$641	\$641	\$641	\$641	
		Single circuit adapt.	16B0002N02	Single circuit adaptor kit for 12-20 kW heater							
	Thermostats	w/o Climadry with ECM motor	ATP32U03	\$317	\$317	\$317	\$317	\$317	\$317	\$317	\$317
		W/Climadry	ATP32U04	\$373	\$373	\$373	\$373	\$373	\$373	\$373	\$373
			ATA22U01	\$75	\$75	\$75	\$75	\$75	\$75	\$75	\$75
	Outdoor temp. sensor		AST008	\$54	\$54	\$54	\$54	\$54	\$54	\$54	\$54
	Anti Scald Valve2		AVAS4	\$180	\$180	\$180	\$180	\$180	\$180	\$180	\$180
	ClimaDry Potentiometer Kit		S17S0018N01	\$92	\$92	\$92	\$92	\$92	\$92	\$92	\$92
	Accessory Pump Slaving Module3		APSM	\$85	\$85	\$85	\$85	\$85	\$85	\$85	\$85
	Secure Start compressor soft start kit		13B0045N01	\$455	\$455	\$455	\$455	\$455	\$455	\$455	\$455
	Secondary drain pan (Qty 10)		ASDPADBS	\$2,073	\$2,073	\$2,073					
			ASDPACBS				\$2,126				
			ASDPABBS					\$2,345	\$2,345		
			ASDPAABS							\$2,400	\$2,400
EarthPure® Air cleaner	Air cleaner	Model	AAC18362CMA	AAC18362CMA	AAC18362CMA	AAC20372CMA	AAC20482CMA	AAC20482CMA	AAC20482CMA	AAC20482CMA	
		Price	\$1,413	\$1,413	\$1,413	\$1,413	\$1,671	\$1,671	\$1,671	\$1,671	
	Replacement media (Qty 4) for EarthPure Air Cleaner	Model	AACM41836A	AACM41836A	AACM41836A	AACM42037A	AACM42042A	AACM42042A	AACM42048A	AACM42048A	
		Price	\$155	\$155	\$155	\$155	\$155	\$155	\$155	\$155	
Motor Upgrade	PSC to ECM 2 Blower Motor Upgrade Kits	Model	EUKTS018**	EUKTS024*	EUKTS030*	EUKTS036**	EUKTS042**	EUKTS048**	EUKTS060	EUKTS070	
		Price	\$936	\$857	\$857	\$1,049	\$1,049	\$1,220	\$987	\$987	
Extended Warranty	Labor Allowance4	EWOSL3	\$515	\$515	\$515	\$515	\$515	\$515	\$515	\$515	

- 1 - Not available with ClimaDry
- 2 - HWG setpoint = 150 deg F
- 3 - 1 Flow Controller - 2 units
- 4 - Optional Extended Factory Service Labor Allowance Warranty 6-10 Years

\* Kit contains a motor belly band  
 \*\* Kit contains a blower housing and a motor belly band  
 \*\*\* TS070 Not Available with PSC; Add ECM

Residential model voltage is 208-230/60/1  
 \*If multiple options are selected, combine option list prices, then apply the multiplier  
 DXM controls required for ClimaDry Reheat option.

### Heat Exchanger Selection Notes:

Air Coils are built standard with tin plating in Residential Models - 018, 060, 070 Models

Micro-channel Air Coils are standard in Residential Models - 024-048 Models

Closed Loop Applications - use copper water coil

Well Water/Open Loop Applications - water quality & quantity test recommended, see water quality standards table in the Installation Manual.

### Optional Extended Service Labor Warranty - EWOSL3

Extends the standard labor warranty of 5 years on all parts to 10 years, including 10 years on all unit parts, thermostats, electric heaters and geothermal pump modules. See ClimateMaster's May 2010 labor allowance schedule and RP852 - ClimateMaster's warranty certificate with extended labor for limitations and details.

## TSD Single Stage Packaged Unit Pricing - Downflow

TSD Single Stage Packaged Unit Pricing - Downflow				Downflow Packaged Unit							
Base unit w/HWG		Position		TSD018	TSD024	TSD030	TSD036	TSD042	TSD048	TSD60	TSD70 ***
		1-6		\$6,302	\$6,534	\$6,760	\$7,130	\$8,245	\$8,387	\$9,325	\$9,755
Additional options	Cupro-Nickel Coil	12		\$215	\$371	\$371	\$371	\$548	\$548	\$587	\$587
	Internal Second. pump1	11		\$231	\$231	\$231	\$288	\$288	\$288	\$288	\$288
	ECM2 Blower Motor	14		\$769	\$769	\$769	\$769	\$769	\$923	\$923	\$923
	Remove Hot Water Gen.	11		(\$638)	(\$638)	(\$638)	(\$638)	(\$638)	(\$638)	(\$638)	(\$638)
Accessories	Auxiliary / Emergency heater	4 KW	AGM4AAG	\$227	\$227	\$227					
		5 KW	AGM5AAG	\$300	\$300	\$300					
		8 KW	AGM8AAG		\$340	\$340					
		10 KW	AGM10AAG		\$355	\$355					
		10 KW	AGL10AAG				\$371	\$371	\$371	\$371	\$371
		15 KW	AGL15AAG				\$588	\$588	\$588	\$588	\$588
		20 KW	AGL20AAG					\$641	\$641	\$641	\$641
	Single circuit adapt.	16B0002N02	Single circuit adaptor kit for 12-20 kW heater								
	Thermostats	w/o Climadry with ECM motor	ATP32U03	\$317	\$317	\$317	\$317	\$317	\$317	\$317	\$317
			ATA22U01	\$75	\$75	\$75	\$75	\$75	\$75	\$75	\$75
		Outdoor temperature sensor	AST008	\$54	\$54	\$54	\$54	\$54	\$54	\$54	\$54
		Anti Scald Valve1	AVAS4	\$180	\$180	\$180	\$180	\$180	\$180	\$180	\$180
		Accessory Pump Slaving Module2	APSM	\$85	\$85	\$85	\$85	\$85	\$85	\$85	\$85
	Secure Start compressor soft start kit	13B0045N01	\$455	\$455	\$455	\$455	\$455	\$455	\$455	\$455	
EarthPure® Air cleaner	Air cleaner	Model	AAC24242CMA	AAC28242CMA	AAC28242CMA	AAC28302CMA	AAC32302CMA	AAC32302CMA	AAC36302CMA	AAC36302CMA	
		Price	\$1,286	\$1,286	\$1,286	\$1,286	\$1,413	\$1,413	\$1,413	\$1,413	
	Replacement media (Qty 4) for EarthPure Air Cleaner	Model	AACM42424A	AACM42824A	AACM42824A	AACM42830A	AACM43230A	AACM43230A	AACM43630A	AACM43630A	
		Price	\$139	\$139	\$139	\$139	\$155	\$155	\$155	\$155	
Motor Upgrade	PSC to ECM 2 Blower Motor Upgrade Kits	Model	EUKTS018**	EUKTS024*	EUKTS030*	EUKTS036**	EUKTS042**	EUKTS048**	EUKTS060	EUKTS070	
		Price	\$936	\$857	\$857	\$1,049	\$1,049	\$1,220	\$987	\$987	
Extended Warranty	Labor Allowance3	EWOSL3	\$515	\$515	\$515	\$515	\$515	\$515	\$515	\$515	

- 1 - HWG setpoint = 150 deg F
- 2 - 1 Flow Controller - 2 units
- 3 - Optional Extended Factory Service Labor Allowance Warranty 6-10 Years

- \* Kit contains a motor belly band
- \*\* Kit contains a blower housing and a motor belly band
- \*\*\* TS070 Not Available with PSC; Add ECM

Residential model voltage is 208-230/60/1  
\*If multiple options are selected, combine option list prices, then apply the multiplier

### Heat Exchanger Selection Notes:

Air Coils are built standard with tin plating in Residential Models - 018, 060, 070 Models  
Micro-channel Air Coils are standard in Residential Models - 024-048 Models  
Closed Loop Applications - use copper water coil  
Well Water/Open Loop Applications - water quality & quantity test recommended, see water quality standards table in the Installation Manual.

### Optional Extended Service Labor Warranty - EWOSL3

Extends the standard labor warranty of 5 years on all parts to 10 years, including 10 years on all unit parts, thermostats, electric heaters and geothermal pump modules. See ClimateMaster's May 2010 labor allowance schedule and RP852 - ClimateMaster's warranty certificate with extended labor for limitations and details.

## Split Units



Tranquility® Digital Splits

### ClimateMaster Residential Split System Unit Features:

ClimateMaster residential split units share many of the same innovative features. Specific model features are listed individually by product series. The following features are standard on all residential split units:

#### Efficiency

- Up to 26.1 EER / 4.5 COP efficiency
- vFlow™ Internal Water Flow delivers 70-80% energy savings in part load vs. single-speed flow centers (when IFC is used) (digital models only)
- Designed for efficient operation from 20°F to 120°F entering water temperatures
- Low pressure drop coaxial heat exchangers
- Optional internally mounted hot water generator coil & pump with high limit control ("free" hot water)
- AHRI/ASHRAE/ANSI/ISO 13256-1 certified
- US EPA Energy Star compliant

#### Comfort

- Two-stage operation with dependable and quiet Copeland UltraTech™ unloading scroll compressor. The unique compressor operating characteristics can switch modes "on the fly" to provide the ultimate comfort and capacity to meet your building's indoor comfort needs, reducing compressor stopping and starting. (Part Load 67%/Full Load 100% capacity)

#### Warranty

- Standard 10-year limited warranty and 5-year labor allowance

#### Reliability

- Heavy gauge galvanized steel cabinet painted with powder coat finish and 1,000 hour salt spray rating
- Liquid line filter drier
- iGate™ monitors and protects unit from abnormal operation (digital models only)
- Anti-short cycle, high & low pressure, loss of charge protection
- Reliable lockout, diagnostic and time delay functions
- Field selectable water coil low temperature cut-out for open or closed loop installations
- Intelligent fault retry
- Condensate overflow protection
- Air coil low temperature cut-out using high accuracy thermistor
- 24vac accessory relays
- UPS (Unit Performance Sentinel) provides early warning of inefficient operating conditions. Fault codes can be displayed at the thermostat if equipped with fault LED or display.
- Run tested to assure maximum efficiency and reliability
- 1" FPT swivel water coax and optional HWG connections
- Circuit breaker protected 75VA transformer
- AHRI & ETL listed

## ClimateMaster Residential Split System Unit Features (Continued):

### Installation

- Ideal for remote applications like 2nd floor or crawl space areas
- Can be used as a total electric heat pump or add on heat pump with fossil fuel backup
- vFlow™ internal components reduce installation time (digital models only)
- iGate™ 4-wire connection and electronic configuration reduce installation time (digital models only)

### Diagnostics

- iGate™ diagnostics on the thermostat (fault condition, possible causes, conditions [temp, flow] at time of fault) set the digital models apart from the competition
- LED fault code and status, fault code memory for easy diagnostics
- CFM display LEDs (Non-Digital models only)
- Input status LEDs (Non-Digital models only)
- Circuit breaker protected loop & HWG pump power block

## Tranquility® Two-Stage Digital Split (TES/TEP) Systems

The Tranquility® Digital Split Geothermal Heat Pumps deliver the ULTIMATE in efficiency (26.1 EER and 4.5 COP\*), comfort, reliability and serviceability – intelligently driven by the industry's first 2-way communicating control, two-stage compressor, variable-speed fan and industry-first vFlow™ internal variable-speed water-flow components, the Tranquility® 30 also delivers reliable operation, lower operating cost and compact installation.

## iGate™—Digital 2-Way Communicating Controls—Monitor, Configure and Diagnose Digitally

- Tranquility® Digital Split units also break new ground in optimized comfort, efficiency, and serviceability, utilizing industry first and exclusive iGate™ Two-Way Communicating Controls as a standard option with every unit. The digital 2-way communicating controls make installation and service of the system easy and effective by allowing monitoring, configuration and diagnosis of the system on a Communicating Digital Thermostat. Furthermore, 2-way communication between the intelligent components inside the system ensures precise coordination of operation to achieve optimized reliability comfort AND efficiency. Installation is even easier with 4-wire connections between the Digital Split unit, TAH Digital Air Handler and communicating thermostat. A Homeowner can see and give their dealer the fault code and possible causes to help prepare for a service call. Once on the job, a dealer can see what the operating conditions of the unit were at the time of the fault, to help narrow down diagnosis.

## vFlow™ Internal Variable Speed Water-flow Control

- ClimateMaster takes ease and speed of installation of geothermal heating and cooling systems to the next level with vFlow™ variable water flow control. vFlow™ integrates water-flow control inside the unit AND takes the guesswork out of setting water-flow. Compared to conventional units that can just turn the water-flow on or off, Tranquility® Digital Splits vary the water-flow, which results in lower operating cost (up to 70-80% in IFC models, part load) and longer system life. New iGate™ communicating control (and communicating Pump / modulating valve) make vFlow™ a reality and only available on ClimateMaster Tranquility® Digital systems.

\* Rated at Ground Loop Conditions ISO 13256-1

## Tranquility® Digital Indoor/Outdoor Split Ratings

### AHRI/ASHRAE/ANSI/ISO 13256-1 English (IP) Efficiencies:

#### Tranquility® Split Ratings with Tranquility® Air Handler

#### TES/P: Tranquility® Digital Indoor/Outdoor Split

Model	Capacity	Water Loop Heat Pump				Ground Water Heat Pump				Ground Loop Heat Pump			
		Cooling 86°F		Heating 68°F		Cooling 59°F		Heating 50°F		Cooling Full Load 77°F Part Load 68°F		Heating Full Load 32°F Part Load 41°F	
	Modulation	Capacity Btuh	EER Btuh/W	Capacity Btuh	COP	Capacity Btuh	EER Btuh/W	Capacity Btuh	COP	Capacity Btuh	EER Btuh/W	Capacity Btuh	COP
TES/P026	Part	19,500	18.8	22,400	6.2	21,900	31.5	18,200	5.1	20,700	25.5	15,800	4.4
	Full	25,100	16.8	28,200	5.2	28,000	25.1	24,300	4.7	25,600	18.5	18,800	3.9
TES/P038	Part	27,200	19.0	30,200	6.0	30,300	32.5	25,000	5.1	29,100	26.1	22,200	4.5
	Full	38,200	17.3	40,500	5.3	42,100	25.2	34,500	4.8	38,800	18.8	27,900	4.1
TES/P049	Part	36,000	17.9	41,800	5.9	40,200	29.6	34,800	5.1	38,300	23.5	30,300	4.3
	Full	48,100	16.4	53,200	5.1	52,900	23.9	46,800	4.7	49,200	17.5	37,100	3.9
TES/P064	Part	43,000	16.6	52,500	5.6	47,800	27.3	43,200	4.7	46,200	22.7	37,600	4.2
	Full	57,200	15.0	67,500	4.8	63,200	22.1	58,100	4.3	59,200	16.9	46,400	3.7

Cooling capacities based upon 80.6°F DB, 66.2°F WB entering air temperature  
 Heating capacities based upon 68°F DB, 59°F WB entering air temperature  
 Ground Loop Heat Pump ratings based on 15% methanol antifreeze solution  
 All ratings based upon operation at lower voltage of dual voltage rated models  
 and when mated with TAH Air Handler.

#### Tranquility® Split Ratings with Tranquility® Cased Coil

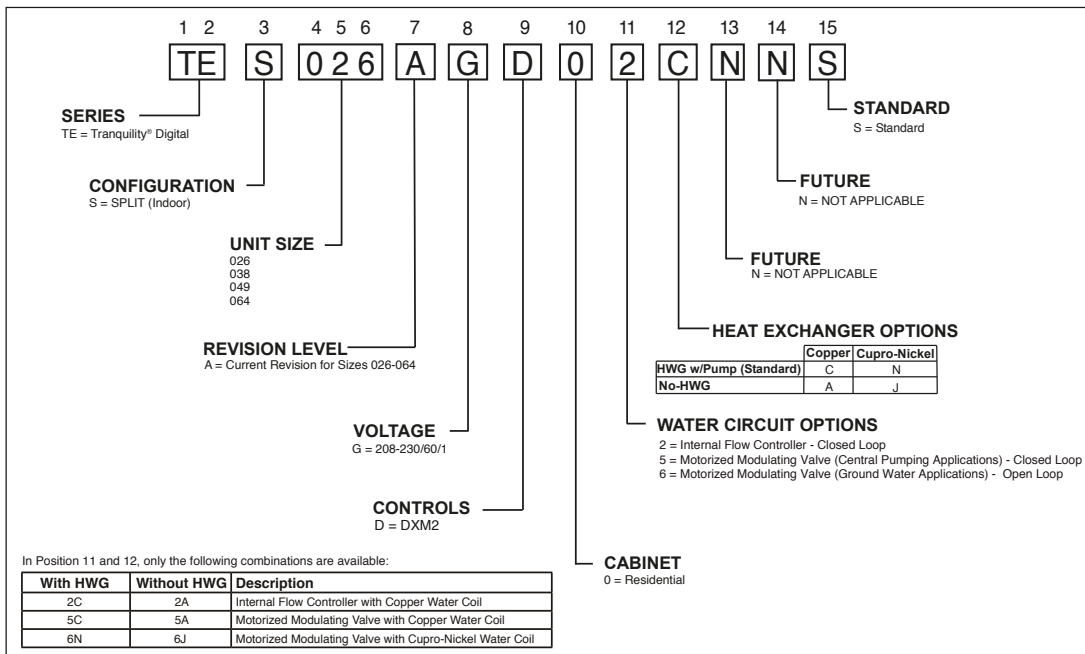
#### TES/P: Tranquility® Digital Indoor/Outdoor Split

Model	Capacity	Water Loop Heat Pump				Ground Water Heat Pump				Ground Loop Heat Pump			
		Cooling 86°F		Heating 68°F		Cooling 59°F		Heating 50°F		Cooling Full Load 77°F Part Load 68°F		Heating Full Load 32°F Part Load 41°F	
	Modulation	Capacity Btuh	EER Btuh/W	Capacity Btuh	COP	Capacity Btuh	EER Btuh/W	Capacity Btuh	COP	Capacity Btuh	EER Btuh/W	Capacity Btuh	COP
TES/P026	Full	25,000	16.2	28,500	5.2	27,900	24.4	24,400	4.7	25,700	18.2	18,600	3.8
	Part	19,200	17.9	22,500	6.0	21,700	29.9	18,400	5.0	20,700	24.5	15,800	4.3
TES/P038	Full	37,900	16.9	41,200	5.4	41,800	24.6	35,000	4.6	38,600	18.7	27,500	4.1
	Part	27,200	18.4	30,500	5.9	30,000	30.5	25,400	5.0	28,600	24.9	22,200	4.4
TES/P049	Full	48,000	16.1	54,500	5.2	52,700	23.4	47,200	4.7	48,800	17.7	36,700	4.0
	Part	35,600	17.1	42,800	6.0	40,000	28.1	35,300	5.1	38,600	23.5	30,400	4.4
TES/P064	Full	56,900	15.0	66,900	4.7	62,200	21.8	57,300	4.3	58,500	16.8	45,600	3.7
	Part	42,600	16.0	52,200	5.5	47,800	26.6	42,800	4.6	45,800	21.9	37,700	4.1

Cooling capacities based upon 80.6°F DB, 66.2°F WB entering air temperature  
 Heating capacities based upon 68°F DB, 59°F WB entering air temperature  
 All ratings based upon 208V operation

## Tranquility® Digital Indoor Split System Two-Stage Geothermal Heat Pump

- Factory-Installed Hot Water Generator with Internal Pump
- Three Easy Lift-out Service Access Panels with Stainless Steel Front Panels
- Standard iGate™ Controls and vFlow™



## TES 2-Stage Split Unit Pricing - Indoor

TES Two-Stage Indoor Split Unit Pricing						
Base unit w/HWG		Position	TES026	TES038	TES049	TES064
Pick one	Closed loop w/IFC, std head	11-12	\$6,688	\$7,444	N/A	N/A
	Closed loop w/IFC, high head	11-12	\$6,945	\$7,701	\$8,374	\$8,803
	Closed loop w/mod valve, central pumping	11-12	\$5,459	\$6,151	\$6,653	\$7,167
	Open loop w/mod valve, CN Coil	11-12	\$5,830	\$6,522	\$7,201	\$7,754
	Closed loop - no vFlow	11-12	\$5,414	\$6,091	\$6,584	\$7,039
	Open loop - no vFlow	11-12	\$5,784	\$6,462	\$7,132	\$7,626
Additional options	Remove Hot Water Gen.	12	(\$638)	(\$638)	(\$638)	(\$638)
Accessories	Configuration / Diagnostic Tool	ACDU02	\$439	\$439	\$439	\$439
	Outdoor temp. sensor	AST008	\$54	\$54	\$54	\$54
	Anti Scald Valve	AVAS4	\$180	\$180	\$180	\$180
	Secure Start compressor soft start kit	13B0045N01	\$455	\$455	\$455	\$455
	Unit pad (Qty 5)	AUQSP2427	\$413			
		AUQSP2732		\$595	\$595	\$595
	Packaged unit stand (Qty 4)	ACSVAMBS	\$1,273			
ACSVALBS			\$1,535	\$1,535	\$1,535	
Extended Warranty	Optional Extended Factory Service Labor Allowance Warranty 6-10 Years	EWOSL3	\$515	\$515	\$515	\$515

ATC32U02 Communicating Thermostat now shipped with EVERY TAH Rev B Air Handler.

- 1 HWG setpoint = 150 deg F
- 2 Optional Extended Factory Service Labor Allowance Warranty 6-10 Years Residential model voltage is 208-230/60/1
- If multiple options are selected, combine option list prices, then apply the multiplier.

### Notes:

ACR line sets are field supplied. Not available from ClimateMaster. See Split Unit IOM for sizing details.  
In split geothermal systems, we recommend using AHRI / Energy Star certified ClimateMaster TAH Air Handlers. When you purchase an extended warranty for the Tranquility® compressor section, we include an extended warranty for the TAH air handler or TAC air coil free of charge.

### Heat Exchanger Selection Notes:

Closed Loop Applications - use copper water coil (option 02 or 05 in position 10-11).  
Well Water/Open Loop Applications - (option 06 in position 10-11) Water quality & quantity test recommended, see water quality standards table in the Installation Manual.

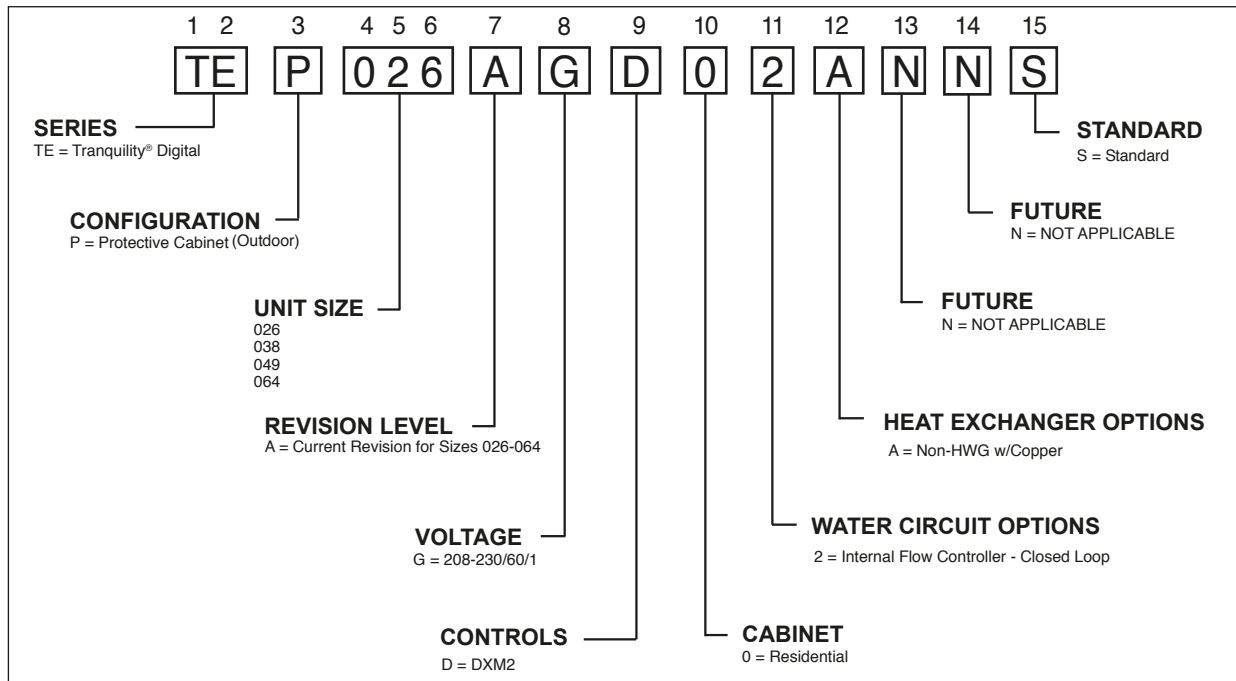
### Optional Extended Service Labor Warranty - EWOSL3

Extends the standard labor warranty of 5 years on all parts to 10 years, including 10 years on all unit parts, thermostats, electric heaters and geothermal pump modules. See ClimateMaster's May 2010 labor allowance schedule and RP852 - ClimateMaster's warranty certificate with extended labor for limitations and details.

## Tranquility® Digital Outdoor Split System Two-Stage Geothermal Heat Pump

### Tranquility® Digital Outdoor Split Unit Additional Features:

- Ideal for unit replacement market, designed for quiet outdoor installations with weather and sound insulated cabinet
- Standard iGate™ Controls and vFlow™
- Thru-the-Bottom loop access
- Remote Desuperheater ready w/service valves
- Crankcase heater to mitigate liquid refrigerant migration



### TEP 2-Stage Split Unit Pricing - Outdoor

TEP 2-Stage Split Unit Pricing - Outdoor			TEP- Outdoor Split			
Base unit	Position		TEP026	TEP038	TEP049	TEP064
		1-6		\$6,808	\$7,080	\$8,518
Accessories	Configuration / Diagnostic Tool	ACDU02	\$439	\$439	\$439	\$439
	Outdoor temp. sensor	AST008	\$54	\$54	\$54	\$54
	Anti Scald Valve1	AVAS4	\$180	\$180	\$180	\$180
	Secure Start compressor soft start kit	13B0045N01	\$455	\$455	\$455	\$455
	Remote Mount HWG kit 115V	AHWG1BASS	\$889	\$889	\$889	\$889
	Remote Mount HWG kit 230V	AHWG1BGSS	\$889	\$889	\$889	\$889
Extended Warranty		EWOSL3	\$515	\$515	\$515	\$515

ATC32U02 Communicating Thermostat now shipped with EVERY TAH Rev B Air Handler.

Residential model voltage is 208-230/60/1

#### Notes:

ACR line sets are field supplied. Not available from ClimateMaster. See Split Unit IOM for sizing details.

In split geothermal systems, we recommend using AHRI / Energy Star certified ClimateMaster TAH Air Handlers. When you purchase an extended warranty for the Tranquility® compressor section, we include an extended warranty for the TAH air handler or TAC air coil free of charge.

#### Optional Extended Service Labor Warranty - EWOSL3

Extends the standard labor warranty of 5 years on all parts to 10 years, including 10 years on all unit parts, thermostats, electric heaters and geothermal pump modules. See ClimateMaster's May 2010 labor allowance schedule and RP852 - ClimateMaster's warranty certificate with extended labor for limitations and details.

## Air Handler and Cased Coils



### ClimateMaster Air Handler Features:

The Tranquility® Air Handler Series has the highest efficiency ratings of any geothermal split system in the industry when matched with ClimateMaster Tranquility® Indoor and Outdoor units. Tranquility® Air Handlers are specifically designed and matched for use with Tranquility® Indoor and Outdoor geothermal split units. Tranquility® Air Handlers are available in vertical upflow or downflow, and horizontal left or horizontal right airflow. Designed for new or retrofit geothermal installations/applications, ideal for remote applications like a 2nd floor, crawl spaces, and attics.

Incorporate the latest iGate® technology from ClimateMaster. The system can be configured, monitored and diagnosed from the digital thermostat. It also allows 4-wire connection between the air handler, split unit and thermostat.

#### Features:

- iGate® Communicating (AXM) Controls
- Fully convertible vertical upflow or downflow, and horizontal left or horizontal right airflow
- EarthPure® HFC-410A refrigerant
- Exceeds Federal requirements for 30% tax credit on installation costs\*
- Exceeds ASHRAE 90.1 and Energy Star 3.0 efficiencies\*
- Low profile control box grants easy access to all internal components
- Large removable access panel provides an open service-friendly cabinet
- Heavy gauge galvanized steel construction with attractive pewter epoxy powder coat paint and stainless steel service access panels

\* When matched with ClimateMaster Tranquility® split compressor section

### ClimateMaster Cased Coil Features:

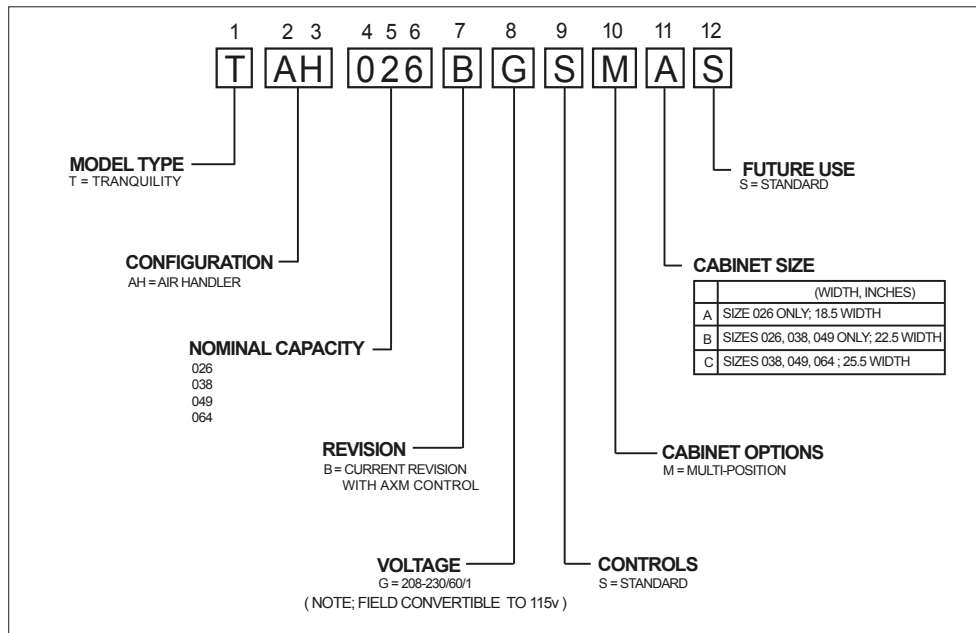
The Tranquility® Cased Coil (TAC) Series has the highest efficiency ratings of any geothermal split system in the industry when matched with ClimateMaster Tranquility® Indoor or Outdoor units. Tranquility® Cased Coils are specifically designed and matched for use with Tranquility® Indoor and Outdoor geothermal split units. This series is available in vertical upflow or downflow, and horizontal left or horizontal right airflow. Designed for retrofit geothermal installations, the Tranquility® Cased Coil Series is ideal for dual fuel geothermal add-on applications.

#### Features:

- Fully convertible vertical upflow or downflow, and horizontal left or horizontal right airflow
- Thermoset plastic drain pan
- EarthPure® HFC-410A refrigerant
- Exceeds Federal requirements for 30% tax credit on installation costs\*
- Exceeds ASHRAE 90.1 and Energy Star 3.0 efficiencies\*
- Easily connects to a new or existing fossil fuel furnaces
- Large removable access panel provides an open service-friendly cabinet
- Heavy gauge galvanized steel construction with attractive grey powder coat finish

\* When matched with ClimateMaster Tranquility® Split compressor section

## Tranquility® Air Handler (TAH)



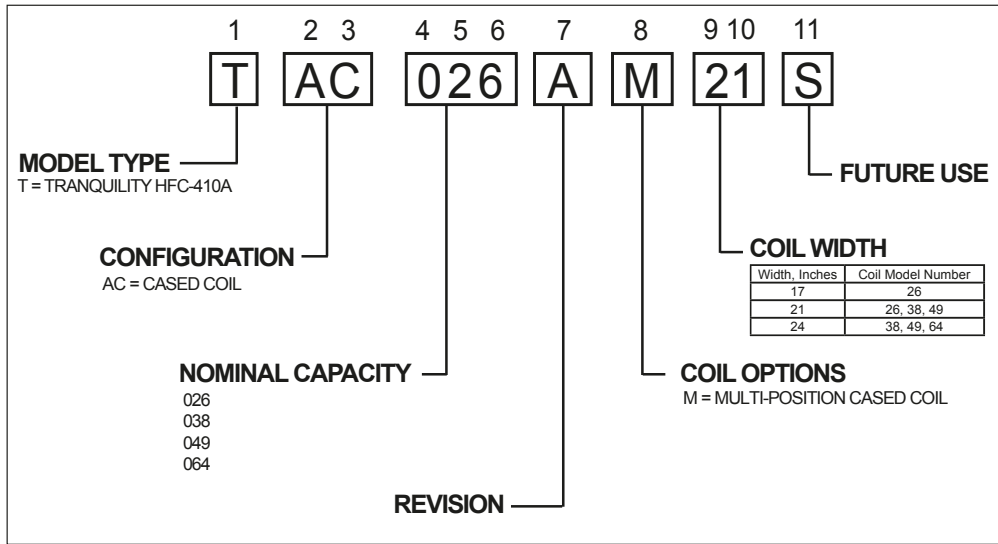
## TAH Air Handler Pricing

TAH Air Handler Pricing			TAH							
Base Unit		Unit Size		TAH026		TAH038		TAH049		TAH064
		Cabinet Width (inches)		18.5	22.5	22.5	25.5	22.5	25.5	25.5
		Price		\$3,044	\$3,257	\$3,449	\$3,629	\$3,646	\$3,811	\$4,080
Accessories	Auxiliary / Emergency heater	4 KW	AGM4CAG	\$316	\$316					
		5 KW	AGM5CAG	\$315	\$315					
		8 KW	AGM8CAG	\$355	\$355					
		10 KW	AGM10CAG							
		10 KW	AGL10CAG			\$379	\$379	\$379	\$379	\$379
		15 KW	AGL15CAG			\$548	\$548	\$548	\$548	\$548
	20 KW	AGL20CAG					\$604	\$604	\$604	
EarthPure® Air Cleaner	Air cleaner	Model	AAC16201CMA	AAC20201CMA	AAC20201CMA	AAC20241CMA	AAC20201CMA	AAC20241CMA	AAC20241CMA	
		Price	\$680	\$680	\$680	\$680	\$680	\$680	\$680	
	Replacement media (Qty 3) for EarthPure Air Cleaner	Model	AACM31620A	AACM32020A	AACM32020A	AACM32024A	AACM32020A	AACM32024A	AACM32024A	
		Price	\$115	\$115	\$115	\$115	\$115	\$115	\$115	
Extended Warranty		-	*	*	*	*	*	*	*	

Includes ATC32U02 Communicating Thermostat with every TAH Rev B Air Handler.

\* FREE When you purchase an extended warranty for the Tranquility® compressor section, we include an extended warranty for the TAH air handler or TAC air coil free of charge.

## Tranquility® Cased Coil (TAC)



### TAC Indoor Convertible Cased Coil Pricing

TAC Indoor Convertible Cased Coil Pricing		TAC						
		TAC026		TAC038		TAC049		TAC064
Base Unit		17	21	21	24	21	24	24
Cabinet Width (inches)		\$733	\$799	\$836	\$1,141	\$1,052	\$1,141	\$1,580
Extended Warranty	-	.*	.*	.*	.*	.*	.*	.*

\* FREE When you purchase an extended warranty for the Tranquility® compressor section, we include an extended warranty for the TAH air handler or TAC air coil free of charge.

## Tranquility® Medium Temperature and High Temperature Water-to-Water Units



### ClimateMaster Tranquility® Residential Water-to-Water Unit Features:

Tranquility® Water-to-Water geothermal heat pump systems are some of the most efficient systems to heat and cool water. These systems can be used for radiant floor heating, pre heating and heating pools and cool spaces. ClimateMaster offers two families of water-to-water systems:

All Tranquility® Water-to-Water units have these features:

#### Appearance

- Durable galvanized steel cabinet with powder coat epoxy painted finish and stainless steel front access panel

#### Efficiency

- 3.1 COP/ Up to 16.4 EER Ground Loop (ARI/ASHRAE/ISO 13256-2 rated)
- Low pressure drop coaxial heat exchanger

#### Comfort

- TMW120 unit includes two independent refrigerant circuits allowing for two stage operation.

#### Quiet

- Double compressor Isolation
- Quiet, fully insulated cabinet

#### Warranty

- Backed by a standard 10 year limited warranty on parts - 5 year limited labor allowance

#### Reliability

- Factory computer run tested for maximum reliability
- ETL listed
- Anti-short cycle, high pressure, loss of charge protection

#### Installation

- Field selectable water coil low temperature cut-out for open or closed loop installations
- Circuit breaker protected loop, water pump power block and 75VA transformer
- 24vac accessory relay
- Small size and easy connection

#### Diagnostics

- Optional internal hot water generator coil and pump

## Tranquility® Medium Temperature Water-to-Water (TMW) Geothermal Heat Pumps

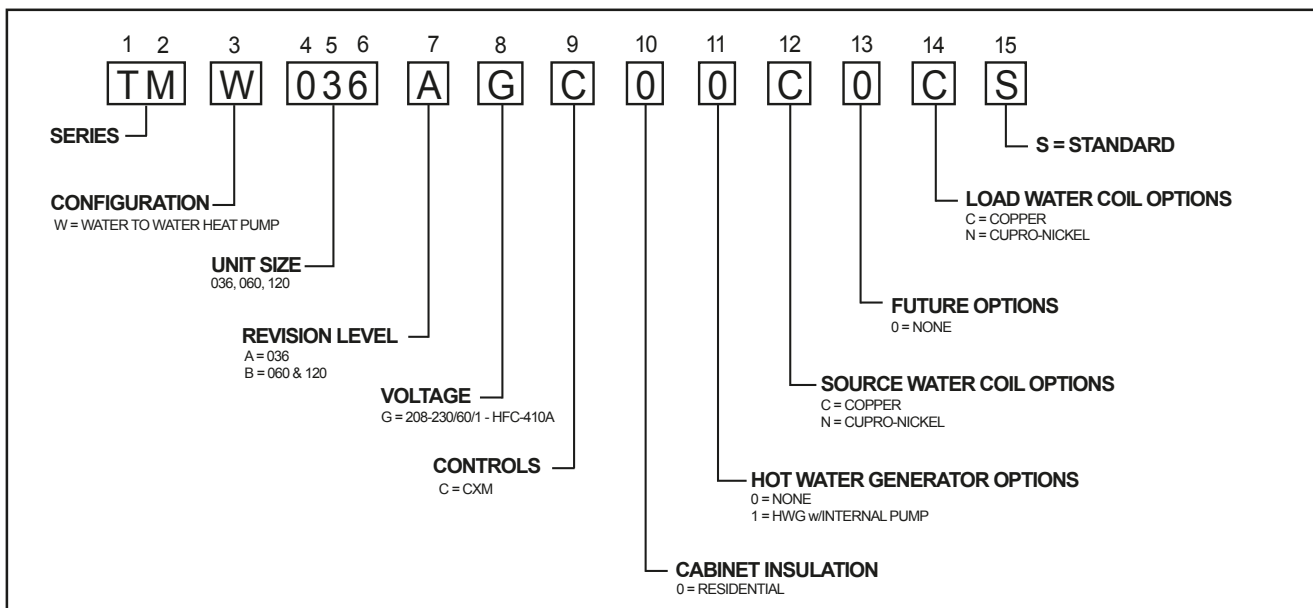
### Tranquility® Medium Temperature Water-to-Water Unit Additional Features:

- Designed for efficient operation from 20°F to 120°F entering water (source) temperatures
- Excellent choice for pools, infloor radiant heating (RFH) or forced air heating and cooling applications when used with external/secondary heat exchangers, hydronic coils and air handlers
- Solid state digital control features:
  - Reliable lockout, diagnostic and time delay functions
  - LED fault and status indication with memory for easy diagnostics. Fault types are not only indicated at the control, but are stored in memory after a user reset for future service use.
  - Compressor "ON" and fault lights on the front of the unit

### Tranquility® TMW Ratings AHRI/ASHRAE/ISO 13256-1 English (IP) Units

Model	Water Loop Heat Pump				Ground Water Heat Pump				Ground Loop Heat Pump			
	Cooling		Heating		Cooling		Heating		Cooling		Heating	
	Indoor 53.6°F Outdoor 86°F		Indoor 104°F Outdoor 68°F		Indoor 53.6°F Outdoor 59°F		Indoor 104°F Outdoor 50°F		Indoor 53.6°F Outdoor 77°F		Indoor 104°F Outdoor 32°F	
	Capacity Btuh	EER Btuh/W	Capacity Btuh	COP	Capacity Btuh	EER Btuh/W	Capacity Btuh	COP	Capacity Btuh	EER Btuh/W	Capacity Btuh	COP
<b>TMW036</b>	32,300	14.60	43,100	4.90	36,200	23.10	35,300	4.00	33,300	16.40	27,400	3.10
<b>TMW060</b>	52,800	14.30	72,700	4.70	56,600	20.30	60,300	4.00	55,600	16.20	48,500	3.10
<b>TMW120</b>	105,600	14.10	145,400	4.60	113,200	20.10	120,600	3.90	111,200	16.10	97,000	3.10

All ratings based upon 208V operation  
Indoor coil also called "Load" and outdoor coil also called "Source"



## TMW Medium Temperature Water-to-Water Pricing

TMW Medium Temperature Water to Water Pricing			TMW		
Base unit w/HWG		Position	TMW036	TMW060	TMW120
		1-6	\$7,122	\$8,697	\$18,650
Additional options	Source Cupro-Nickel Coil	12	\$548	\$587	\$1,175
	Load Cupro-Nickel Coil	14	\$548	\$587	\$1,175
	Remove Hot Water Generator	11	(\$638)	(\$638)	(\$638)
Accessories	Anti Scald Valve (HWG setpoint = 150 deg F)	AVAS4	\$180	\$180	\$180
	Accessory Pump slaving module (1 Flow controller - 2 units)	APSM	\$85	\$85	\$85
	Secure Start compressor soft start kit	13B0045N01	\$455	\$455	\$455
Extended Warranty		EWOSL3	\$515	\$515	\$515

Residential model voltage is 208-230/60/1

### Water Coil Selection Notes:

Closed Loop Applications - use copper water coil  
 Well Water/Open Loop Applications - water quality & quantity test recommended, see water quality standards table in the Installation Manual.

In split geothermal systems, we recommend using AHRI / Energy Star certified ClimateMaster TAH Air Handlers. When you purchase an extended warranty for the Tranquility® compressor section, we include an extended warranty for the air handler or air coil free of charge.

### Optional Extended Service Labor Warranty - EWOSL3 - .00

Extends the standard labor warranty of 5 years on all parts to 10 years, including 10 years on all unit parts, thermostats, electric heaters and geothermal pump modules. See ClimateMaster's labor allowance schedule and RP852 - ClimateMaster's warranty certificate with extended labor for limitations and details.

## Tranquility® High Temperature Water-to-Water (THW) Geothermal Heat Pumps

### Tranquility® High Temperature Water-to-Water Unit Additional Features:

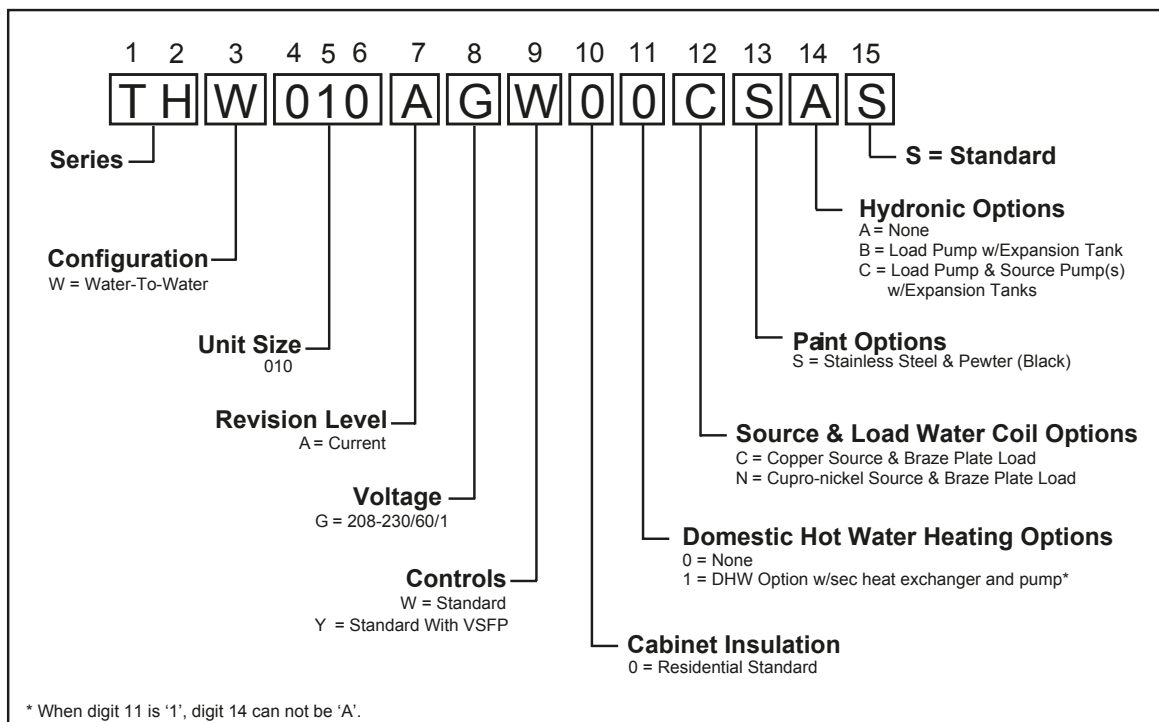
The THW series is unlike any other water-to-water heat pump on the market today. The large operating map of the scroll compressor allows high temperature operation, up to 145°F [63°C] leaving load water temperature even at 32°F [0°C] entering source water temperature. The combination of a coaxial (tube-in-tube) heat exchanger for the source (ground loop) side and a brazed plate heat exchanger for the load (heating/hot water) side provides very high efficiencies. Integral controls for hydronic heating and domestic water heating avoid the need for external microprocessor-based controls for outdoor temperature reset, warm weather shutdown, staging and other controls.

- Size 32,600 Btuh (10kW)
- "Euro-style" cabinet for attractive look
- Galvanized steel construction with protective powder coat paint and stainless steel, hinged front access door
- Large, back-lit digital user interface
- Built-in programmable controller with Outdoor Temperature Reset and Warm Weather Shutdown
- High temperature scroll compressor, up to 145°F (63°C) leaving water temperature
- Ultra high efficiencies (4.2 COP at ground loop conditions; up to 5.5 COP at ground water conditions!)
- Hinged front access door and 3 removable panels for ease of installation and service

### Tranquility® THW Ratings AHRI/ASHRAE/ISO 13256-1 English (IP) Units

Model	Ground Loop Heat Pump				Ground Water Heat Pump			
	Heating				Heating			
	Indoor 86/95°F Outdoor 32/27°F		Indoor 104/113°F Outdoor 32/27°F		Indoor 86/95°F Outdoor 50/45°F		Indoor 104/113°F Outdoor 50/45°F	
Capacity Mbtuh	COP	Capacity Mbtuh	COP	Capacity Mbtuh	COP	Capacity Mbtuh	COP	
<b>THW010</b>	32.6	4.2	30.8	3.3	42.6	5.2	39.9	4.1

Indoor temperature is also called "Load;" outdoor temperature is also called "Source." Numbers shown with "/" indicate entering/leaving water temperatures. Bold outline indicates typical radiant floor application temperatures. Ratings at 40°C [104°F] are based upon AHRI/ISO Standard 13256-2; all other ratings are based upon Standard EN 14511-2.



## THW High Temperature Water-to-Water Pricing

THW High Temperature Water To Water Pricing			THW
Base unit w/DHW mode		Position	THW010
		1-6	\$14,465
Additional options	Source Cupro-Nickel Coil	12	\$454
	VSFP Controls	9	\$39
	Load Pump w/Exp Tank	14	\$752
	Load and Source Pumps w/Exp Tank	14	\$1,928
	Remove DHW	11	(\$3,309)
Accessories	Anti Scald Valve (HWG setpoint = 150 deg F)	AVAS4	\$180
	Accessory Pump slaving module (1 Flow controller - 2 units)	APSM	\$85
Extended Warranty		EWOSL3	\$515

Residential model voltage is 208-230/60/1

\* If multiple options are selected, combine option list prices, then apply the multiplier

### Option Notes:

VSFP Controls are used with Radiant Floor Systems with Variable Speed pumping systems.

Orders without the inclusion of factory supplied source/load pumps and expansion tanks will require field supplied pumps and tanks by others.

See the Water to Water System Design Guide Manual for details.

DHW includes internal secondary heat exchanger and factory-installed potable water, bronze circulating pump.

### Water Coil Selection Notes:

Closed Loop Applications - use copper water coil

Well Water/Open Loop Applications - water quality & quantity test recommended, see water quality standards table in the Installation Manual.

### Optional Extended Service Labor Warranty - EWOSL3

Extends the standard labor warranty of 5 years on all parts to 10 years, including 10 years on all unit parts, thermostats, electric heaters and geothermal pump modules. See ClimateMaster's May 2010 labor allowance schedule and RP852 - ClimateMaster's warranty certificate with extended labor for limitations and details.

# Loop Accessories

## Closed Loop Accessories



AFC4I



AFC4C



AFC6F



Flow Controller  
Double O-Ring Connections



Hose Kit  
AHK5EC



AFC4T

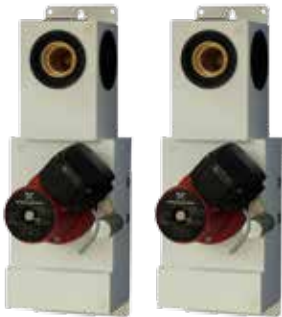


AFC5F



Hose Kit  
AHK5PE

## Extra Large Closed Loop Accessories



AFCG2B3



AFCG2B4

## Open Loop Accessories



Plastic Solenoid  
Valve - AVSP5



Brass Motorized  
Valve - AVMB5



Flow Regulator  
AFRV\*



P/T Plug  
70022002  
& 70022003

## Loop Accessory Pricing

Loop Accessories					Price
Closed Loop Accessories	Flow Controllers	Composite 3-way valves	AFCG1C1	1-GRUNDFOS UP26-99 PUMP	\$962
			AFCG1C2	1-GRUNDFOS UP26-116 PUMP	\$962
			AFCG2C1	2-GRUNDFOS UP26-99 PUMP	\$1,304
			AFCG2C2	2-GRUNDFOS UP26-116 PUMP	\$1,304
		Brass 3-way valves	AFCG1B1	1-GRUNDFOS UP26-99 PUMP	\$1,238
			AFCG1B2	1-GRUNDFOS UP26-116 PUMP	\$1,238
			AFCG2B1	2-GRUNDFOS UP26-99 PUMP	\$1,633
			AFCG2B2	2-GRUNDFOS UP26-116 PUMP	\$1,633
	Double O-ring Adaptor fittings, Set of Two (One set Required for All Flow Controllers for Loop Connection)	Fusion	AFC5F	1.00" PE SOCKET FUSION	\$28
			AFC6F	1.25" PE SOCKET FUSION	\$28
		Insert	AFC4I	1.00" BRASS BARD INSERT	\$109
			AFC6I	1.25" BRASS BARD INSERT	\$112
	Cam	AFC4C	1.00" CAM LEVER - for flush connections	\$37	
		Thread	AFC4T	1.00" MPT BRASS THREAD	\$124
	Flow Controller - Hose Kits & Fittings	Hose Kit	AHK5EC	Includes double O-ring x 1.00" barb insert for connection to Flow Controller, 1.00" MPT x 1.00" barb insert el w/PT port for unit connection, & 10' of 1.00" rubber hose.	\$232
		Additional Hose	ARH510	10' of 1.00" Rubber Hose	\$111
			ARH550	50' of 1.00" Rubber Hose	\$278
		Elbows with PT Ports	AFCM55F	Set of 1" MPT x 1" FPT Elbows with PT ports	\$116.00
	vFlow Hose Kits	Hose Kit	AHK5PE	Includes(2) 1/4" PT Plugs, (12') 1" ID Black Hose, (8) Stainless steel hose clamps, (2) Elbow, 1" MPT x 1" Hose Barb w/PT Port, (1) Fitting Set (2 Fittings), 1-1/4" PE Fusion x 1" Hose Barb Brass, Crimped, (2) Elbow Insulating Boots w/sealing caps	\$263
	Open Loop Accessories	Solenoid & Motorized Valves	AVSP5	1.00" FTP, 24 VAC-Solenoid Valve, Plastic	\$72
AVMB4			0.75" FTP, 24 VAC-Motorized Valve, Brass w/end switch safety controls	\$263	
AVMB5			1" SWT, 24 VAC- Motorized Valve, Brass w/end switch safety controls	\$297	
AVMB-PH			Powerhead	\$141	
Flow regulators		AFRV*	2 GPM-10 GPM are Brass 0.75" FPT *Specify GPM when ordering. Example 6gpm = AFR6 Call Factory for pricing and availability for larger than 9 gpm-	\$97	
Pressure/Temperature Ports		70022002	Brass 0.25" MPT - Qty.1	\$18	
		70022003	Brass 0.50" MPT - Qty.1	\$21	

### Closed Loop Accessory Notes:

- Flow Controllers include limited 10-year parts warranty and 5-year labor allowance when sold with a unit.
- UP 26-99 Single pump = 15 GPM @ 20' of head pressure; Dual pumps = 15 GPM @ 40' of head pressure.
- UP 26-116 Single pump = 15 GPM @ 25' of head pressure; Dual pumps = 15 GPM @ 50' of head pressure.
- Brass 3-way Valves Requires adapter fitting set for loop connection. Hose kit includes adapter set for hose/unit connections.
- AFC4C should be ordered to Flush and Fill Closed Loop Systems 1 set per dealer/contractor to be used as a minimum.
- On Additional Hose, max recommended hose length not to exceed 10 feet one-way.

### Open Loop Accessory Notes:

- Solenoid/Motorized valves are to be located in Leaving water side piping
- Flow Regulators are to be located after Solenoid/Motorized valve
- Pressure/Temperature Ports (P/T fittings) should always be located on unit water coax inlet/outlet to provide unit performance data access
- P/T fittings - choose either .25" or .50" diameter, .25" dia. works with 90 deg. brass swivel fitting, 69183134
- Two stage units (TMW120 series) should include Open Loop Accessories for each water coax
- Consider utilizing part number AHK5EC Hose Kit for unit connections plus Solenoid Valves/Motors and Flow Regulator(s) for easy hook ups

## Extra Large Loop Accessory Pricing

New Geo Loop Pumps are for larger residential projects or small commercial applications where smaller flow controllers can not deliver desired flow rates. All pumps are 3 speed models for field flow adjustment and are 230 / 1 phase power. GPM and feet of head ratings are at high speed/maximum capacity.

Loop Accessories					List Price
Closed Loop Accessories	Flow Controllers	Brass 3-way valves	AFCG1B3	1-GRUNDFOS UPS32-160 PUMP	\$4,251
			AFCG2B3	2-GRUNDFOS UPS32-160 PUMP	\$6,933
			AFCG2B4	2-GRUNDFOS UPS60-150 PUMP	\$3,191
	Double O-ring Adaptor fittings, Set of Two (One set Required for All Flow Controllers for Loop Connection)	Fusion	AFC7F	2.00" PE SOCKET FUSION	\$206
		Cam	AFC7C	1.50" CAM LEVER - for flush connections	\$211
		Thread	AFC8T	2.00" FPT BRASS THREAD	\$206
	Flow Controller - Hose Kits & Fittings	Hose Kit	AHK8ES	2" Hose Kit w/ Strainer	\$1,500
			AHK8E	2" Hose Kit	\$1,178

**Closed Loop Accessory Notes:**

- Flow Controllers include limited 5-year parts warranty and DOA labor allowance when sold with a unit.
- UPS32-160 Single pump = 15 GPM @ 41' of head pressure; Dual pumps = 15 GPM @ 82' of head pressure.
- UPS60-150 Single pump = 15 GPM @ 35' of head pressure; Dual pumps = 15 GPM @ 70' of head pressure.
- Brass 3-way Valves Requires adapter fitting set for loop connection. Hose kit includes adapter set for hose/unit connections.
- AFC7C should be ordered to Flush and Fill Closed Loop Systems 1 set per dealer/contractor to be used as a minimum.
- On Additional Hose, max recommended hose length not to exceed 8 feet one-way.

## Installation Accessories

Part Number	Description	List Price
AFC9C	1" MPT x 1" aluminum CAM fitting for the Flush Cart	\$19
AFCG1PT	Geo Prime Tank	\$505
AFCG2PT	Pressure Battery Expansion Tank	\$218
AGOFL	Geo-Gooser Kit	\$300
AFCG1BT	Geo-Booster	\$879
AGOFC	Flush Cart	\$4,017
AG1DC	Functional Geo Display Cart for use at trade show and training events. This display is intended only for 2 and 3 ton vertical upflow units with an internal pump. Heat pump not included. This is a drop ship item	\$4,017
AGOFCB001	1 Micron Flush Filter Bag	\$29
AGOFCB100	100 Micron Flush Filter Bag	\$29

Multiplier Code RH



**Geo Prime Tank**

The Geo Prime Tank allows the use of normal pressurized flow controllers as a "non-pressurized" ground loop system. The Prime Tank installs above the normal flow controller and maintains a column of liquid at the pump's inlet.



**Pressure Battery**

Pressure Battery/Expansion Tank is designed to allow for expansion and contraction of the loop. The tank expands using an internal diaphragm in summer and contracts in the winter to exert/absorb pressure in the loop.



**Geo-Gooser Kit w/Elbows**

Geo Gooser Kit provides an easy means to re-pressurize the loop field by adding liquid into the loop field through a pressure/temperature port without a flush and fill process.



**Geo-Booster**

Geo Booster is designed to maintain a minimum pressure on ground loop systems that uses an antifreeze solution. The internal pump forces fluid into the loop system from a one gallon internal storage tank if static pressure drops below 35 psi.



**Flush Cart**

Flush Cart is used during initial loop fill and flush procedure to fill the loop and then circulated to remove any air or debris in the loop system.



**Geo Display Cart**

Functional Geo Display Cart for use at trade show and training events. This display is intended only for 2 and 3 ton vertical upflow units with an internal pump. Heat pump not included. This is a drop ship item.

## Geothermal Loop Pipe

### Geothermal Loop Pipe Features:

- Designed for socket or butt fusion connection
- Internal banding for easy handling and control
- 160 psi
- 50 year warranty
- Coils marked in 2 foot increments
- NSF Geothermal Certification

Material: The material shall maintain a 160 psi Hydrostatic Design Basis at 73.4°F per ASTM D-2837. This material shall be a high density, polyethylene 3408 having a cell classification of PE345434C as specified in ASTM D-3350. ClimateMaster acknowledges Solvay Polymers, Inc., Houston, TX, as the primary supplier of high density polyethylene resin (K44-15-23) specifically for this use.

Specifications for ClimateMaster Geothermal Loop Pipe & Fittings

General: All pipe and heat fused materials are manufactured from a virgin, high density, polyethylene 3408 material manufactured in accordance with ASTM D-2513 sections 4.1 and 4.2. Pipe shall be manufactured to outside diameters, wall thickness, and respective tolerances as specified in ASTM D-3035, D-2447 or F-714.



U-Bend Coils



100' Pipe Bundle



Spaced Pond Loop Coils

**DISCOUNT:** Ten percent (10%) discount on geothermal pipe orders of \$5,000 list or more, shipped factory direct in pallet quantities.

**DISCOUNT:** Pipe will ship directly from vendor in pallet quantities, freight will be pre-pay and add. Less than pallet quantities will ship from ClimateMaster. Call for availability of different coil lengths or larger diameters.

### Geothermal Loop Pipe

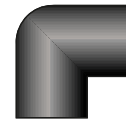
Geothermal Loop Pipe						
Part Number	Pipe Diameter	Pipe Length in Feet	Package Type	Pipe Type	Coils Per Pallet	List Price Per Each
GP4L100	0.75" IPS	100	Bundle 5x20'	SDR11	N/A	\$62
GP4C200	0.75" IPS	200	Coil	SDR11	13	\$125
GP4C300	0.75" IPS	300	Coil	SDR11	10	\$187
GP4C500	0.75" IPS	500	Coil	SDR11	8	\$312
GP4C600	0.75" IPS	600	Coil	SDR11	8	\$374
GP4C800	0.75" IPS	800	Coil	SDR11	8	\$500
GP5L100	1.00" IPS	100	Bundle 5x20'	SDR11	N/A	\$95
GP5C300	1.00" IPS	300	Coil	SDR11	10	\$284
GP5C500	1.00" IPS	500	Coil	SDR11	6	\$474
GP6L100	1.25" IPS	100	Bundle-5x 20'	SDR11	N/A	\$143
GP6C100	1.25" IPS	100	Coil	SDR11	14	\$143
GP6C300	1.25" IPS	300	Coil	SDR11	14	\$431
GP8L100	2.00" IPS	100	Bundle-5x20'	SDR11	N/A	\$227
GP8C100	2.00" IPS	100	Coil	SDR11	10	\$227
GP8C300	2.00" IPS	300	Coil	SDR11	7	\$681
Coils with U-Bend Attached						
GP4C350U	0.75" IPS	350	2-175' Coils	SDR11	12	\$276
GP4C410U	0.75" IPS	410	2-205' Coils	SDR11	10	\$314
GP4C510U	0.75" IPS	510	2-255' Coils	SDR11	8	\$377
GP5C410U	1.00" IPS	410	2-205' Coils	SDR11	8	\$447
GP5C510U	1.00" IPS	510	2-255' Coils	SDR11	8	\$541
GP5C610U	1.00" IPS	610	2-305' Coils	SDR11	8	\$637
GP5C710U	1.00" IPS	710	2-355' Coils	SDR11	8	\$730
GP5C810U	1.00" IPS	810	2-405' Coils	SDR11	8	\$826
Spaced Pond Loop Coil						
GP4S300	0.75" IPS	300	Coil	SDR11	5	\$425

## Geothermal Fittings

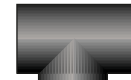
Part Number	Description	Box Quantity	List Price Per Piece
<b>Fusion Coupling</b>			
GFC44	0.75" x 0.75"	120	\$3.00
GFC55	1.00" x 1.00"	80	\$5.00
GFC64	1.25" x 0.75"	50	\$5.00
GFC65	1.25" x 1.00"	50	\$5.00
GFC66	1.25" x 1.25"	40	\$5.00
GFC85	2.00" x 1.00"	30	\$9.00
GFC86	2.00" x 1.25"	30	\$9.00
GFC88	2.00" x 2.00"	30	\$9.00
<b>Fusion Elbow 90 degrees</b>			
GFE44	0.75" x 0.75"	70	\$4.00
GFE54	1.00" x 0.75"	50	\$5.00
GFE55	1.00" x 1.00"	50	\$5.00
GFE64	1.25" x 0.75"	100	\$6.00
GFE66	1.25" x 1.25"	90	\$6.00
GFE88	2.00" x 2.00"	30	\$18.00
<b>Fusion Tee</b>			
GFT444	0.75" x 0.75" x 0.75"	75	\$8.00
GFT555	1.00" x 1.00" x 1.00"	50	\$10.00
GFT644	1.25" x 0.75" x 0.75"	70	\$10.00
GFT655	1.25" x 1.00" x 1.00"	60	\$10.00
GFT664	1.25" x 1.25" x 0.75"	60	\$10.00
GFT665	1.25" x 1.25" x 1.00"	60	\$12.00
GFT884	2.00" x 2.00" x 0.75"	25	\$20.00
GFT885	2.00" x 2.00" x 1.00"	25	\$20.00
GFT888	2.00" x 2.00" x 2.00"	25	\$20.00
<b>Fusion U-Bend Fitting</b>			
GFEU44	0.75" x 0.75" Street el	120	\$4.00
GFEU55	1.00" x 1.00" Street el	200	\$5.00
GFEU66F	1.25" x 1.25" Short female	90	\$7.00
GFEU66M	1.25" x 1.25" Short male	90	\$7.00
GFU44	0.75" U-Bend Bullet	1	\$35.00
GFU55	1.00" U-Bend Bullet	1	\$45.00
GFU66	1.25" U-Bend Bullet	1	\$56.00
<b>Fusion Cap</b>			
GFCP4	0.75"	160	\$4.00
GFCP5	1.00"	160	\$5.00
GFCP6	1.25"	100	\$5.00
GFCP8	2.00"	30	\$11.00
<b>Fusion Header - Pre Assembled</b>			
GFK644K02	1.25" Inlet x (3) 0.75" Outlets	15	\$20.00
GFK644K03	1.25" Inlet x (4) 0.75" Outlets	20	\$27.00
GFK644K04	1.25" Inlet x (5) 0.75" Outlets	20	\$37.00
GFK644K05	1.25" Inlet x (6) 0.75" Outlets	20	\$53.00
<b>Fusion X Male Nominal Thread X FPT</b>			
GFMT453	0.75" x 1.00" MNT x 0.50" FPT	40	\$29.00
GFMT553	1.00" x 1.00" MNT x 0.50" FPT	50	\$29.00
<b>Fusion X Male Swivel Adaptor - For use w/90B0001N02</b>			
GFMC565	1.00" Fusion x 1.25" Brass Swivel NPT	30	\$39.00
GFMC665	1.25" Fusion x 1.25" Brass Swivel NPT	20	\$39.00
<b>Fusion X Male Adaptor</b>			
GFMA44	0.75" x 0.75" MPT Brass	30	\$21.00
GFMA55	1.00" x 1.00" MPT Brass	20	\$23.00
GFMA65	1.25" x 1.00" MPT Brass	25	\$25.00
GFMA66	1.25" x 1.25" MPT Brass	30	\$40.00
GFMA88	2.00" x 2.00" MPT Brass	30	\$71.00
<b>Fusion Adaptor Hose Barb</b>			
GFFA65H	1 1/4" socket fusion x 1" hose barb	30	\$38.00



Coupling



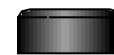
Elbow



Tee



U-Bend Fitting



Cap



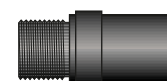
Bullet Fitting



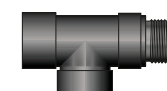
Header



Swivel Adaptor



Male Adaptor

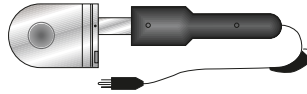


Male Adaptor Tee

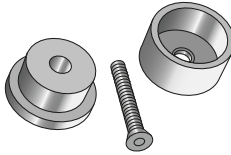
## Socket Fusion Tools

Socket Fusion Tools		
Part Number	Description	Dealer Price

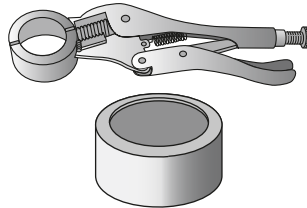
Heating Tool		
HVTD48	Fusion Tool, Double Socket Face	\$531



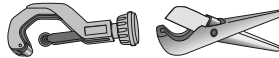
Socket Face		
HSF4P	0.75" IPS	\$101
HSF5P	1.00" IPS	\$101
HSF6P	1.25" IPS	\$101
HSF8P	2.00" IPS	\$101



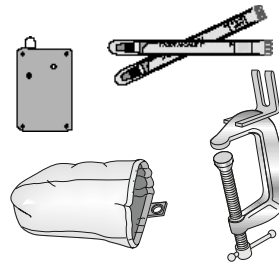
Cold Ring		
HCR4P	0.75" IPS	\$81
HCR5P	1.00" IPS	\$101
HCR6P	1.25" IPS	\$101
HCR8P	2.00" IPS	\$101



Combo Depth Gauge and Chamfer Tool		
HDC4P	0.75" IPS	\$107
HDC5P	1.00" IPS	\$107
HDC6P	1.25" IPS	\$107
HDC8P	2.00" IPS	\$107



Fusion Tool Accessories		
HMB	Fusion Tool Mounting Bracket	\$32
HFT	Fusion Timer	\$56
HHB	Fusion Tool Cover	\$34
HS500	Tempstik 500°F	\$24
HS525	Tempstik 525°F	\$24



Complete Fusion Kits		
HHAK46WDP	0.75" & 1.25" IPS - Double	\$886
HHAK468WDP	0.75", 1.00", 1.25" & 2.00" IPS - Double	\$1,446



Kits Include: Heating tool, socket face set, depth gauge, cold rings, hex keys, tubing cutter, screwdriver, tempsticks, timer, tool bag cover, cotton wipe bag.

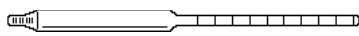
## Service Tools & Software

Item	Part Number	Description	Dealer Price
Temperature Measurement	ADT160	Digital Thermometer for use with P/T Ports	\$23.00
Pressure Measurement	APG100	Pressure Gauge, 0-100 psi	\$25.00
Gauge Probe Adapter	APTGA	P/T Port Adapter for use with APG100	\$20.00
Alcohol Anti-Freeze Tester (.9-1)	AHYDA	Specific Gravity Hydrometer	\$32.00
Glycol Anti-Freeze Tester (1-1.07)	AHYDG	Specific Gravity Hydrometer	\$32.00
Control Checker	ATS007	Monitor/checks safety controls	\$30.00
AC Magnetic Field Indicator	AACMF1	Check pump operation	\$7.00

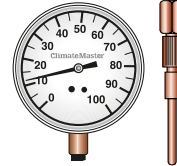
Multiplier Code RT



Digital Thermometer



Antifreeze Tester



Pressure Gauge and Adapter



AC Magnetic Field Indicator

## Service Parts Kit

Item	Part Number	Description	Dealer Price
Residential Service Parts Kit	ASPK	Designed to provide inexpensive parts for dealers. Contains emergency installation and service parts for Residential units and Flow Controllers.	\$505.00
Residential Service Parts Kit	ASPK1	ASPK plus DXM2 and related harnesses	\$826.00
Residential Service Parts Kit	ASPK2	ASPK plus DXM2 and related harnesses plus ACDU02	\$945.00
Residential Service Parts Kit	ASPK3	Service tool kit for Trilogy (QE)	\$2,460.00
Service Tool Case	ADSTC01	Black plastic case with handle and foam padding for ACDU01 Communicating Service Tool	\$23.00

Multiplier Code RT



Service Tool Case

## Cabinet Samples

Part Number	Description	Net Price
SAMPLECABTZV036	Low cost, lightweight display unit to take to home shows, county fairs, or for use in a showroom.	\$447.00
SAMPLECABTEV038		\$538.00
SAMPLECABTTV026		\$268.00
SAMPLECABTTV049		\$268.00
SAMPLECABTMW060		\$295.00

Multiplier Code RT



Cabinet Sample

**May 2010 Standard Warranty Overview**

The 2010 standard warranty applies to units ordered on or after May 1, 2010. See ClimateMaster’s 2010 Limited Express Residential Warranty Certificate RP851 for specific coverage and limitations.

ClimateMaster residential class heat pumps are backed by a ten-year limited warranty on all unit parts, including the following accessories when installed with ClimateMaster units: Flow Controllers, Thermostats, Electric Heaters, & Trilogy® Smart Tank.

ClimateMaster goes even further to back up its commitment to quality by including a service labor allowance for the first five years on unit parts and thermostats, auxiliary electric heaters and geothermal pumping modules.

**Optional Extended Factory Service Labor Allowance Warranty**

List Price - \$500 Part Number - EWOSL3

List Price - \$750 Part Number – EWOSL4 (Trilogy® only)

This optional warranty offers additional length of term protection to the consumer by offsetting service labor costs for 10 years.

See the schedule below for the allowance amounts and term of coverage. To order this warranty, complete the application and submit to your distributor. This coverage must be purchased within 90 days of unit installation. See Limited Express Extended Labor Warranty Certificate RP852 for details.

Distributor Note: The Optional Extended Factory Service Labor Allowance Warranty is ordered on the Business Center using the EWOSL part number. Contact your Customer Service Representative if you need any assistance.

May 2010 Replacement / Repair Allowances:	LABOR ALLOWANCE DOLLARS	ALLOWANCE TERM	
		STANDARD*	EWOSL
Water coil replacement	\$420.00	5 Years	10 Years
Compressor replacement	\$350.00	5 Years	10 Years
Air coil replacement	\$350.00	5 Years	10 Years
Hot water generator coil replacement	\$280.00	5 Years	10 Years
Reversing valve body replacement	\$280.00	5 Years	10 Years
Expansion valve replacement	\$210.00	5 Years	10 Years
ClimaDry coil replacement	\$210.00	5 Years	10 Years
Refrigerant leak or restriction (brazing required)	\$175.00	5 Years	10 Years
Service valve replacement (split unit)	\$140.00	5 Years	10 Years
Pressure switch replacement	\$140.00	5 Years	10 Years
Blower motor replacement	\$105.00	5 Years	10 Years
Water leak repair - loop circuit	\$105.00	5 Years	10 Years
Water pump or valve replacement - loop circuit	\$105.00	5 Years	10 Years
Water leak repair - hot water circuit	\$70.00	5 Years	10 Years
Water pump replacement - hot water	\$70.00	5 Years	10 Years
Main control board replacement	\$70.00	5 Years	10 Years
Blower wheel replacement	\$70.00	5 Years	10 Years
Noise repair	\$70.00	5 Years	10 Years
All other warranty component replacements	\$35.00	5 Years	10 Years
Additional Allowances:			
Diagnostic allowance	\$35.00	5 Years	10 Years
Travel allowance 25 miles or less, one way	\$35.00	5 Years	10 Years
Travel allowance over 25 miles, one way	\$70.00	5 Years	10 Years
Refrigerant allowance - R410a data plate*		5 Years	10 Years

\*Allow up to data plate charge at \$8/lb

\*\*Same time period as covered repair or replacement

**ELIGIBILITY:** The labor coverage in the above schedule applies only to ClimateMaster brand units ordered on or after May 1, 2010.

**See service labor allowance warranty notes on next page for details.**

## SERVICE LABOR ALLOWANCE NOTES:

1. All allowances requiring entry into or repair of the refrigerant circuit includes evacuation, reclaim, recharge and drier change
2. Allowance for compressor replacement includes cleanup, evacuation, reclaim, recharge and drier change
3. Noise repair paid only when due to internal component failure, malfunction, or misalignment
4. Diagnostic allowance will be paid only in conjunction with a covered replacement or repair
5. Only one (1) travel allowance will be paid in conjunction with a covered replacement or repair
6. Claims with multiple component replacements:
  - Most significant component will receive allowance per schedule above
  - Each additional component will receive an allowance of 0.5 hours
7. Allowed hours are total man-hours

### Standard Limited 10 Year Warranty RP851

**CLIMATE MASTER, INC.**  
**LIMITED EXPRESS WARRANTY/LIMITATION OF REMEDIES AND LIABILITY FOR RESIDENTIAL CLASS PRODUCTS WITH LABOR ALLOWANCE**

It is expressly understood that unless a statement is specifically identified as a warranty, statement made by Climate Master, Inc. a Delaware corporation ("CM") or its representatives, relating to CM's products, whether oral, written or contained in any other literature, including agreements, are not express warranties and do not form part of the basis of the bargain, but are merely CM's opinion or representation of CM's products. EXCEPT AS SPECIFICALLY SET FORTH HEREIN, THERE IS NO EXPRESS WARRANTY AS TO ANY OF CM'S PRODUCTS. CM MAKES NO WARRANTY AGAINST LATENT DEFECTS. CM MAKES NO WARRANTY OF MERCHANTABILITY OF THE GOODS OR OF THE FITNESS OF THE GOODS FOR ANY PARTICULAR PURPOSE.

**GRANT OF LIMITED EXPRESS WARRANTY**  
Climate Master, Inc. Residential Class products, purchased and installed in the United States of America and Canada, to be free from defects in material and workmanship under normal use and maintenance as follows: (1) An air conditioning, heating and/or heat pump units built or sold by CM ("CM Units") for ten (10) years from the Warranty Inception Date (as defined below); (2) Thermostats, auxiliary electric heaters and geothermal pumping modules built or sold by CM, when installed with CM Units, for ten (10) years from the Warranty Inception Date (as defined below); and (3) Other accessories and parts built or sold by CM, when installed with CM Units, for one (1) year from the date of shipment from CM. The "Warranty Inception Date" shall be the date of original unit installation, or six (6) months from date of unit shipment from CM, whichever comes first.

To make a claim under this Warranty, parts must be returned to CM in Oklahoma City, Oklahoma, freight prepaid, no later than ninety (90) days after the date of failure of the part. If CM determines the part to be defective and within CM's Limited Express Warranty, CM shall, subject to part being either replaced or repaired, return such a faulty, recognized defective, dealer or service organization, I.O.B. CM, Oklahoma City, Oklahoma, freight prepaid. The warranty as any part repaired or replaced under warranty expires at the end of the original warranty period.

This Limited Express Warranty shall cover the labor charges for the installation of a new or repaired warranty part that is covered by this Limited Express Warranty only to the extent specifically set forth in the following labor allowance schedule provided by CM's Warranty Department and only as follows: (1) CM Units for five (5) years from the Warranty Inception Date; (2) Thermostats, auxiliary electric heaters and geothermal pumping modules built or sold by CM, when installed with CM Units, for five (5) years from the Warranty Inception Date; (3) CM Units for one (1) year from the date of shipment from CM. Actual labor costs not covered by this Limited Express Warranty to the extent they exceed the amount allowed under said allowance schedule, they are not specifically provided for in said allowance schedule, they are not the result of work performed by CM authorized service personnel, they are incurred in connection with a part not covered by this Limited Express Warranty, or they are incurred more than the time periods set forth in this paragraph after the Warranty Inception Date.

This warranty does not cover and does not apply to: (1) Air filters, hoses, refrigerant, fluids, oil; (2) Products released after initial installation; (3) Any portion or component of any system that is not supplied by CM, regardless of the cause of the failure of such portion or component; (4) Products on which the unit identification tags or labels have been removed or defaced; (5) Products on which permits or CM or to the owner's seller or installing contractor, in its default; (6) Products subjected to improper or inadequate installation, maintenance, repair, wiring or voltage conditions; (7) Products subjected to abnormal, excessive, negligent, abuse, fire, flood, lightning, unauthorized alteration, manipulation, contamination or corrosive air or liquid supply, operation at abnormal air or liquid temperature or flow rates, or opening of the refrigerant circuit by unqualified personnel; (8) Mold, fungus or bacteria damage; (9) Corrosion or abrasion of the product; (10) Products supplied by others; (11) Products which have been repaired in a normal course of CM's regular maintenance; (12) Products which have had inferior performance as a result of improper system design or improper application, installation, or use of CM products; or (13) Electricity or fuel costs, or any increase or unanticipated savings in same, for any reason whatsoever.

This Limited Express Warranty provides the limited labor allowance coverage set forth above. Otherwise, CM is not responsible for: (1) The costs of any fluids, refrigerant or system components supplied by others, or associated labor to repair or replace the same, which is incurred as a result of a defective part covered by CM's Limited Express Warranty; (2) The cost of labor, refrigerant, materials or wiring required in diagnosis and removal of the defective part, or in obtaining and replacing the new or repaired part; (3) Transportation costs of the defective part from the installation site to CM, or of the return of that part if not covered by CM's Limited Express Warranty; or (4) The cost of normal maintenance.

This Limited Express Warranty applies to CM Residential Class products ordered from CM on or after May 1, 2010 (this would generally include CM Units with serial numbers beginning with "N118" and higher), and is not retroactive to any products ordered from CM prior to May 1, 2010 (this would generally include CM Units with serial numbers beginning with "N117" and lower). If you are unsure if this Limited Express Warranty applies to the product you have purchased, contact CM at the phone number or address reflected below.

**Limitation:** This Limited Express Warranty is given in lieu of all other warranties. In substantiating the disclaimer contained herein, it is determined that other warranties exist, any such express warranty, including without limitation any express warranties or any implied warranties of fitness for particular purpose and merchantability, shall be limited to the duration of the Limited Express Warranty.

**LIMITATION OF REMEDIES**  
In the event of a breach of the Limited Express Warranty, CM will only be obligated at CM's option to repair the failed part or unit, or to furnish a new or rebuilt part or unit in exchange for the part or unit which has failed. If after written notice to CM's factory in Oklahoma City, Oklahoma of such defect, malfunction or other failure, and a reasonable number of attempts by CM to correct the defect, malfunction or other failure, and the remedy fails of a reasonable program, CM shall refund the purchase price paid by CM in exchange for the return of the failed product. Such refund shall be the maximum liability of CM. THIS REMEDY IS THE SOLE AND EXCLUSIVE REMEDY OF THE BUYER OR PURCHASER AGAINST CM FOR BREACH OF CONTRACT, FOR THE BREACH OF ANY WARRANTY OR FOR CM'S NEGLIGENCE OR IN STRICT LIABILITY.

**LIMITATION OF LIABILITY**  
CM shall have no liability for any damages if CM's performance is delayed for any reason or is prevented to any extent by any event such as, but not limited to, any war, civil unrest, government restrictions or embargos, strikes, or work stoppages, fire, flood, accident, shortages of transportation, fuel, material, labor, acts of God or any other causes beyond the sole control of CM. CM EXPRESSLY DISCLAIMS AND EXCLUDES ANY LIABILITY FOR CONSEQUENTIAL OR INCIDENTAL DAMAGE IN CONTRACT, FOR BREACH OF ANY EXPRESS OR IMPLIED WARRANTY, OR TORT, WHETHER THROUGH CM'S NEGLIGENCE OR IN STRICT LIABILITY.

**OBTAINING WARRANTY PERFORMANCE**  
Normally, the dealer or service organization who installed the product will provide warranty performance for the owner. Should the installer be unavailable, contact any CM recognized distributor, dealer or service organization. If assistance is required in obtaining warranty performance, write or call:

Climate Master, Inc. • Customer Service • 7300 SW 44th Street • Oklahoma City, Oklahoma 73179 • (405) 745-6000 • [service@climatemaster.com](mailto:service@climatemaster.com)

NOTE: Some states or Canadian provinces do not allow limitations on how long implied warranty lasts, or the limitation or exclusion of consequential or incidental damages, or the foregoing exclusions and limitations may not apply to you. This warranty gives you specific legal rights, and you may also have other rights which vary from state to state and from Canadian province to Canadian province.

Please refer to the CM Installation, Operation and Maintenance Manual for operating and maintenance instructions.

Part No.: RP851

### Optional Limited 10 Year Warranty with Labor Allowance RP852

**CLIMATE MASTER, INC.**  
**LIMITED EXPRESS WARRANTY/LIMITATION OF REMEDIES AND LIABILITY FOR RESIDENTIAL CLASS PRODUCTS WITH EXTENDED LABOR ALLOWANCE**

It is expressly understood that unless a statement is specifically identified as a warranty, statement made by Climate Master, Inc. a Delaware corporation ("CM") or its representatives, relating to CM's products, whether oral, written or contained in any other literature, including agreements, are not express warranties and do not form part of the basis of the bargain, but are merely CM's opinion or representation of CM's products. EXCEPT AS SPECIFICALLY SET FORTH HEREIN, THERE IS NO EXPRESS WARRANTY AS TO ANY OF CM'S PRODUCTS. CM MAKES NO WARRANTY AGAINST LATENT DEFECTS. CM MAKES NO WARRANTY OF MERCHANTABILITY OF THE GOODS OR OF THE FITNESS OF THE GOODS FOR ANY PARTICULAR PURPOSE.

**GRANT OF LIMITED EXPRESS WARRANTY**  
Climate Master, Inc. Residential Class products, purchased and installed in the United States of America and Canada, to be free from defects in material and workmanship under normal use and maintenance as follows: (1) An air conditioning, heating and/or heat pump units built or sold by CM ("CM Units") for ten (10) years from the Warranty Inception Date (as defined below); (2) Thermostats, auxiliary electric heaters and geothermal pumping modules built or sold by CM, when installed with CM Units, for ten (10) years from the Warranty Inception Date (as defined below); and (3) Other accessories and parts built or sold by CM, when installed with CM Units, for one (1) year from the date of shipment from CM. The "Warranty Inception Date" shall be the date of original unit installation, or six (6) months from date of unit shipment from CM, whichever comes first.

To make a claim under this Warranty, parts must be returned to CM in Oklahoma City, Oklahoma, freight prepaid, no later than ninety (90) days after the date of failure of the part. If CM determines the part to be defective and within CM's Limited Express Warranty, CM shall, subject to part being either replaced or repaired, return such a faulty, recognized defective, dealer or service organization, I.O.B. CM, Oklahoma City, Oklahoma, freight prepaid. The warranty as any part repaired or replaced under warranty expires at the end of the original warranty period.

This Limited Express Warranty shall cover the labor charges for the installation of a new or repaired warranty part that is covered by this Limited Express Warranty only to the extent specifically set forth in the following labor allowance schedule provided by CM's Warranty Department and only as follows: (1) CM Units for ten (10) years from the Warranty Inception Date; (2) Thermostats, auxiliary electric heaters and geothermal pumping modules built or sold by CM, when installed with CM Units, for ten (10) years from the Warranty Inception Date; (3) CM Units for one (1) year from the date of shipment from CM. Actual labor costs not covered by this Limited Express Warranty to the extent they exceed the amount allowed under said allowance schedule, they are not specifically provided for in said allowance schedule, they are not the result of work performed by CM authorized service personnel, they are incurred in connection with a part not covered by this Limited Express Warranty, or they are incurred more than the time periods set forth in this paragraph after the Warranty Inception Date.

This warranty does not cover and does not apply to: (1) Air filters, hoses, refrigerant, fluids, oil; (2) Products released after initial installation; (3) Any portion or component of any system that is not supplied by CM, regardless of the cause of the failure of such portion or component; (4) Products on which the unit identification tags or labels have been removed or defaced; (5) Products on which permits or CM or to the owner's seller or installing contractor, in its default; (6) Products subjected to improper or inadequate installation, maintenance, repair, wiring or voltage conditions; (7) Products subjected to abnormal, excessive, negligent, abuse, fire, flood, lightning, unauthorized alteration, manipulation, contamination or corrosive air or liquid supply, operation at abnormal air or liquid temperature or flow rates, or opening of the refrigerant circuit by unqualified personnel; (8) Mold, fungus or bacteria damage; (9) Corrosion or abrasion of the product; (10) Products supplied by others; (11) Products which have been repaired in a normal course of CM's regular maintenance; (12) Products which have had inferior performance as a result of improper system design or improper application, installation, or use of CM products; or (13) Electricity or fuel costs, or any increase or unanticipated savings in same, for any reason whatsoever.

This Limited Express Warranty provides the limited labor allowance coverage set forth above. Otherwise, CM is not responsible for: (1) The costs of any fluids, refrigerant or system components supplied by others, or associated labor to repair or replace the same, which is incurred as a result of a defective part covered by CM's Limited Express Warranty; (2) The cost of labor, refrigerant, materials or wiring required in diagnosis and removal of the defective part, or in obtaining and replacing the new or repaired part; (3) Transportation costs of the defective part from the installation site to CM, or of the return of that part if not covered by CM's Limited Express Warranty; or (4) The cost of normal maintenance.

This Limited Express Warranty applies to CM Residential Class products ordered from CM on or after May 1, 2010 (this would generally include CM Units with serial numbers beginning with "N118" and higher), and is not retroactive to any products ordered from CM prior to May 1, 2010 (this would generally include CM Units with serial numbers beginning with "N117" and lower). If you are unsure if this Limited Express Warranty applies to the product you have purchased, contact CM at the phone number or address reflected below.

**Limitation:** This Limited Express Warranty is given in lieu of all other warranties. In substantiating the disclaimer contained herein, it is determined that other warranties exist, any such express warranty, including without limitation any express warranties or any implied warranties of fitness for particular purpose and merchantability, shall be limited to the duration of the Limited Express Warranty.

**LIMITATION OF REMEDIES**  
In the event of a breach of the Limited Express Warranty, CM will only be obligated at CM's option to repair the failed part or unit, or to furnish a new or rebuilt part or unit in exchange for the part or unit which has failed. If after written notice to CM's factory in Oklahoma City, Oklahoma of such defect, malfunction or other failure, and a reasonable number of attempts by CM to correct the defect, malfunction or other failure, and the remedy fails of a reasonable program, CM shall refund the purchase price paid by CM in exchange for the return of the failed product. Such refund shall be the maximum liability of CM. THIS REMEDY IS THE SOLE AND EXCLUSIVE REMEDY OF THE BUYER OR PURCHASER AGAINST CM FOR BREACH OF CONTRACT, FOR THE BREACH OF ANY EXPRESS OR IMPLIED WARRANTY, OR TORT, WHETHER THROUGH CM'S NEGLIGENCE OR IN STRICT LIABILITY.

**LIMITATION OF LIABILITY**  
CM shall have no liability for any damages if CM's performance is delayed for any reason or is prevented to any extent by any event such as, but not limited to, any war, civil unrest, government restrictions or embargos, strikes, or work stoppages, fire, flood, accident, shortages of transportation, fuel, material, labor, acts of God or any other causes beyond the sole control of CM. CM EXPRESSLY DISCLAIMS AND EXCLUDES ANY LIABILITY FOR CONSEQUENTIAL OR INCIDENTAL DAMAGE IN CONTRACT, FOR BREACH OF ANY EXPRESS OR IMPLIED WARRANTY, OR TORT, WHETHER THROUGH CM'S NEGLIGENCE OR IN STRICT LIABILITY.

**OBTAINING WARRANTY PERFORMANCE**  
Normally, the dealer or service organization who installed the product will provide warranty performance for the owner. Should the installer be unavailable, contact any CM recognized distributor, dealer or service organization. If assistance is required in obtaining warranty performance, write or call:

Climate Master, Inc. • Customer Service • 7300 SW 44th Street • Oklahoma City, Oklahoma 73179 • (405) 745-6000 • [service@climatemaster.com](mailto:service@climatemaster.com)

NOTE: Some states or Canadian provinces do not allow limitations on how long implied warranty lasts, or the limitation or exclusion of consequential or incidental damages, or the foregoing exclusions and limitations may not apply to you. This warranty gives you specific legal rights, and you may also have other rights which vary from state to state and from Canadian province to Canadian province.

Please refer to the CM Installation, Operation and Maintenance Manual for operating and maintenance instructions.

Part No.: RP852

### Unit Selection

Be sure to include complete model number to specify unit configuration and options.

### Answer these questions when building your equipment order:

\* What type of unit do you want?

- Water to Air - (Forced Air applications)?

- Water to Water - (Hydronic Applications)?

- iGate™ System with vFlow™ Technology?

See the Table of Contents & Category Code

\* Do you need Left Hand or Right Hand Return Air?

(Units with LH are usually Stocked Standard - ask about a RH option if you can use it)

Return air configuration is always based upon facing the Loop Water Piping connections (considered the front of the unit).

\* Do you need Copper or Cupro Nickel Water Coil option? (Units with copper are typically Stocked Standard)

See IOM (Installation, Operation and Maintenance manual) for Open Loop/Well Water Application section Water Quality Table for appropriate water heat exchanger material selection. Copper is always used on Closed Loop designs, Check chart if Cupro Nickel is necessary (many times Copper is acceptable). Cupro Nickel could be used on any application type.

\* Do you want the HWG (Hot Water Generator) domestic water heater option? (Units are typically Stocked Standard with this feature)

\* Always order Air Pad with each unit (This may not apply to Horizontal applications)

\* See Price List - Packaged Unit Accessories - Unit Stands, Pads and Secondary Drain Pans

\* We recommend the use of our Auxiliary Heater packages for easy installation/compatibility

\* See Price List - Unit Accessory page for Heater selection options chart

### Water Side Accessory Selection

\* Closed Loop System designs

### Flow Controller Pump Selection (Double O-ring style) - Does Not Apply to 'vFlow™' Units

• Choose Composite or Brass 3-way Valve option Flow Controller style

• Choose either UP26-99 or UP26-116 motor size

Up to 3 ton size units - typically single pump AFCG1 (choose Composite or Brass type)

3.5 to 6 ton size units - typically two pump AFCG2 (choose Composite or Brass type)

\* Order double O-ring adapter fittings to connect Flow Center to Loop Piping (Supply & Return)

\* Each dealer/loop contractor should keep 1 pair of PN: AFC4C Double O-ring x 1.00" Cam Lever fittings to Flush /fill and Service Closed Loop Systems

### Unit Hose Kit Selection

Double O-ring type Flow Controller Pump(s) – AHK5EC or AHK5PE for vFlow™ Models (if required)

\* **Note:** Recommended to connect unit(s) to Flow Controller or Water Well applications.

\* Contact the local Distributor or factory CSR Dept for assistance regarding replacing old style Flow Controllers and repair parts.

Loop Pipe and Fittings: Each loop configuration/job is custom designed, Rules of Thumb should NOT BE used. See a qualified person for assistance in Design/Sizing/Selection and Fusion Welding.

### Open Loop/Well Water System Designs

\* Solenoid or Motorized Valve - Does Not Apply to 'vFlow™' Units

Choose Plastic or Brass solenoid or motorized valve(s) depending upon contractor choice.

\* **Note:** Two stage units may need one (1) per stage depending upon contractor choice to conserve water. See the IOM (Installation, Operation and Maintenance) manual for further details.

\* **Note:** Choose Motorized Valve design for quietest operation and safety switch.

\* **Note:** Solenoid/Valve(s) and Flow Regulator(s) are to be located in Unit Water Out piping

### Flow Regulator(s)

You must specify GPM flow rate needed when ordering. Typically 1.5 to 2 GPM/ton of unit size needed Example: 3 ton unit - X 2 GPM flow rate per ton = 6 GPM needed. Order PN: AFRV006 Note: Flow Regulator to be located after Solenoid/Motorized Water Valve in Unit Water Out piping

\* **Note:** Two stage units may need one (1) per stage depending upon contractor choice to conserve water. See the IOM (installation, Operation and Maintenance) manual for further details

\* **Note:** Two stage unit BTU capacity per stage is 67% Part Load/100% Full Load

\* Always Verify Well Water Quantity/Quality and appropriate disposal location BEFORE selecting Well Water applications.

## **Pressure/Temperature Ports**

All Open/Well Water systems must have one (1) each P/T Brass Service Port Fitting at each unit swivel fitting. (two (2) per coaxial coil)

Choose either .50" MPT or .25" MPT Brass P/T Fittings or Unit Hose Kit Option (Contractor to field supply 1" pipe nipples and Tee to allow P/T Fittings to be located near unit swivel fittings for service and performance checks).

\* **Note:** AHK5E(C) Hose Kits can be utilized with Solenoid/Motorized Valve and Flow Regulator to provide P/T Service fittings and plumbing connections to open/well water controls.

\* See IOM (Installation, Operation and Maintenance) manual for Piping Details.

## **Install/Service Tools – Ask if the Technicians have these water source specific tools (1 set min. needed).**

- Gauge Probe Adapter – APTGA P/T (Pressure/Temperature) Port Adapter for use with APG100
- Pressure Gauge – APTGA 0 – 100 psi for use with APTGA P/T Port Adapter
- Anti-Freeze Tester/Hydrometer – AHYDA for Alcohol or AHYDG for Food-grade Propylene Glycol

## **Filters**

\* We strongly recommend you consider purchasing a case of Replacement Filters with each Water to Air unit, as they are unit specific and size, especially MERV filters.

\* Note: All filter manufactures qualities are not the same.

\* We strongly recommend all dealers/contractors attend the proper training before designing/installing or servicing water source / geothermal equipment and accessories.

\* We recommend the use of ACCA Manual J or equivalent Heat Gain/Loss calculations BEFORE unit selection is made.

\* GeoDesigner Software is available to assist in residential unit, loop and energy analysis comparisons and sizing.

\* Pressure Drop Software is available to assist in residential unit loop sizing, design and Flow Controller pump selection.

\* We recommend the use of IGSHPA (International Ground Source Heat Pump Association - Stillwater, OK) Designs and Standards.

## Distributor Notes

### Transportation Costs

All orders with units and/or pipe will be shipped PREPAY & ADD. The actual freight costs with all discounts applied from the trucking company will be added to the invoice. Freight costs for all other orders will be calculated on the Business Center order and that same amount will be invoiced at the shipment.

### Stock Unit Charge

Units shipped from factory stock or requested earlier than current lead time will be charged an additional \$75 NET per unit.

### Quick Build

All Tranquility TS units are eligible for the Quick Build Program, excluding units with the ClimaDry option. The charge will be \$150 NET per unit, availability will be confirmed on the sales order acknowledgement no later than the next business day. If capacity and/or parts are not available, standard lead times will apply.

## MERV 11 Replacement Filters (Two Inch)

TEH & TSH - Horizontal Units			TEV/D & TSV/D - Vertical Units		
018 - 030	2 - 18 x 18	76B0005N01	018	1 - 24 x 24	76B0005N08
036 - 038	1 - 12 x 20	76B0005N02	024 - 030	1 - 24 x 28	76B0005N14
	1 - 20 x 25	76B0005N09	036 - 038	1 - 28 x 30	76B0005N15
042 - 049	1 - 18 x 20	76B0005N04	042 - 049	1 - 30 x 32	76B0005N19
	1 - 20 x 24	76B0005N07			
060 - 072	2 - 20 x 24	76B0005N07	060 - 072	2 - 30 x 36	76B0005N20

## MERV 8 Replacement Filters (One Inch)

TZH - Horizontal Units			TZV - Vertical Units		
024 - 030	1 - 18 x 24	76B0015N07	024 - 030	1 - 20 x 20	76B0015N01
036 - 042	2 - 14 x 20	76B0015N05	036 - 042	1 - 24 x 24	76B0015N02
048 - 060	1 - 20 x 24	76B0015N06	048 - 060	1 - 28 x 28	76B0015N03
	1 - 14 x 20	76B0015N05			

Filter pricing available on the Business Center or by contacting your Customer Service Representative

These are nominal sizes: Actual sizes are slightly smaller.

## Shipping Weights & Dimensions

Product		Packaged Dimension L x W x H	Shipping Weight LB's	Shipping Weight KG's	Pallet Stacking	Product		Packaged Dimension L x W x H	Shipping Weight LB's	Shipping Weight KG's	Pallet Stacking
QEH	0930	68 x 30 x 29	293	132	1 HIGH	QEV	0930	28 x 31 x 61.5	293	132	1 HIGH
	1860	81 x 33 x 28	436	198	1 HIGH		1860	31 x 36 x 61.5	436	198	1 HIGH
TEH	026	68 x 30 x 26	308	140	4 HIGH	TEV	026	28 x 31 x 58	308	140	2 HIGH
	038	77 x 33 x 27	369	167	4 HIGH		038	31 x 36 x 57	369	167	2 HIGH
	049	81 x 33 x 27	458	208	3 HIGH		049	31 x 36 x 60	458	208	1 HIGH
	064	87 x 33 x 28	485	220	3 HIGH		064	31 x 36 x 65	485	220	1 HIGH
	072	87 x 33 x 28	485	220	3 HIGH		072	31 x 36 x 65	485	220	1 HIGH
TZH	024	56 x 30 x 25	205	93	4 HIGH	TZV	024	30 x 26 x 47	221	100	2 HIGH
	030	56 x 30 x 25	213	97	4 HIGH		030	30 x 26 x 47	229	104	2 HIGH
	036	60 x 30 x 28	235	106	4 HIGH		036	30 x 29 x 53	251	114	2 HIGH
	042	60 x 30 x 28	250	113	4 HIGH		042	30 x 29 x 53	266	121	2 HIGH
	048	75 x 33 x 28	306	139	4 HIGH		048	40 x 29 x 53	322	146	1 HIGH
	060	75 x 33 x 28	321	146	3 HIGH		060	40 x 29 x 53	337	153	1 HIGH
TSH	018	68 x 30 x 25	267	121	4 HIGH	TSV	018	29 x 31 x 54	262	119	2 HIGH
	024	68 x 30 x 25	276	125	4 HIGH		024	29 x 31 x 54	276	125	2 HIGH
	030	68 x 30 x 25	278	126	4 HIGH		030	29 x 32 x 54	278	126	2 HIGH
	036	76 x 33 x 27	337	153	4 HIGH		036	31 x 36 x 57	337	153	2 HIGH
	042	76 x 33 x 27	424	192	4 HIGH		042	31 x 36 x 60	424	192	1 HIGH
	048	81 x 33 x 27	426	193	4 HIGH		048	31 x 36 x 60	426	193	1 HIGH
	060	81 x 33 x 27	451	205	3 HIGH		060	31 x 36 x 64	451	205	1 HIGH
	070	87 x 33 x 27	453	205	3 HIGH		070	31 x 36 x 64	453	205	1 HIGH
TES	026	31 x 28 x 30	248	113	2 HIGH	TEP	026	43 x 32 x 39	260	118	2 HIGH
	038	36 x 31 x 32	266	121	2 HIGH		038	43 x 32 x 39	278	126	2 HIGH
	049	36 x 31 x 32	295	134	2 HIGH		049	43 x 32 x 39	324	147	2 HIGH
	064	36 x 31 x 32	310	141	2 HIGH		064	43 x 32 x 39	352	160	2 HIGH
TMW	036	36 x 31 x 36	373	169	1 HIGH	THW	010	31 x 28 x 54	402	182	1 HIGH
	060	36 x 31 x 36	385	175	1 HIGH						
	120	36 x 57 x 40	770	349	1 HIGH						

**Notes:**

Date	Page	Product	Description
12/12/14	All	All	Price increase 3% on all units, updated Electric Heater Board part numbers to new revision
11/24/14	23-27, 39	TE, TZ, and TES	Price changes for TE/TZ and TES w/no vflow
		TZ	Price changes for TZ
	Various	TT Product Family	Removed
8/21/14	22-24	TE	Changed TE Closed Loop w/IFC, standard head, removed pricing for sizes 049-072
			Price updated on TE026, 038; added Closed Loop, IFC, Std Head to tables on TEV, TED, TEH Tables
7/16/14	22-24	TE	Added Additional options to TEV, TEH, TED Price decrease TEV026, TEV038 Closed Loop Added 'high head' after 'flow controller' on TE Closed Loop
7/16/14	72	QED	Removed unit pads and stands
7/16/14	54	Geothermal Fittings Table	Added GFFA65H
7/16/14	56	Service Tools Table	Added ACMFI
7/16/14	50	Loop Accessories	Added AFCM55F
7/16/14	16	QED	Added EWOSL4
7/16/14	14,15,16	QEV, QEH, QED	Added AST008
7/16/14	57	Optional Extended Factory Service Labor Allowance Warranty	Added EWOSL4
7/16/14	56	Service Parts Kit Table	Added ASPK2, ASPK3, and ADSTC01
7/16/14	4	Water-to-Water	System Comparison Table Updated
5/8/14	2, 6-9	QE	Information Updated
3/21/14	Various	QE	Added
1/31/14	Various	ACDU02 and ATC32U02	Replaced ACDU01 and ATC32U01
1/31/14	41	AFC9C	Added
1/9/13	39	AFC4I and AFCGI	Prices Corrected
10/21/13	13, 25	TZ, TEP/S	ISO Ratings Updated
9/25/13	31	TAH	Base Price Increase
9/25/13	27, 28, 31	TES, TEP, TAH	ATC32U01 Information Updated
6/14/13	26, 30	TTS	Revised to Revision C
6/14/13	Various	TTP	Discontinued
6/14/13	46	Service Parts Kit	Changed price ASPK1 and ASPK2
6/14/13	Various	Warranty	Changed EWOSL3 to \$500 from \$520
1/31/13	29	TTS	Decoder Updated
12/20/12	Various	All	Price increase 4%
11/20/12	24-28	TES/TEP	Added
11/20/12	18-19	TZ	Price Increase for Sizes 024 and 036
11/20/12	21-23	TS	'TS070 Not Available with PSC; Add ECM' Note Added
7/2/12	9, 17	TE and TZ	Decoders Updated
6/27/12	42	Combo Depth Gauge and Chamber Tool	Table replaced separate Depth Gauge Table and Chamfer Tool Table
6/27/12	43	Cabinet Sample	Table Added
5/8/12	36-37	Accessory	AHK5P3 Added
5/8/12	39	Accessory	Geo Display Cart Added
5/8/12	8-12	TE	Added
3/6/12	Various	Secure Start Compressor Soft Start Kit	Price Increase
11/30/11	4, 12	Thermostats and TZ	Added ACDU01 and TZ description
10/21/11	All	All	Price Increase 4% all units, New Layout, Added TZ and Accessories Added
3/15/11	All	Units & Accessories	Price Increase
11/3/10	35	Filters	Added replacement filters
11/3/10	10, 11	TTS/TTP	Corrected line set size
9/20/10	20	Accessories	Added unit pad, cabinet stand, drain pan
8/13/10	18	Accessories	Added SecureStart
8/13/10	19	Heaters	Added revision C
8/13/10	6, 7	TT/TS	Removed Uniguard Coil Option
8/13/10	6, 7	TT/TS	Added Internal Secondary Pump Option
8/13/10	2, 6, 7	TT/TS	Changed E-Coated to Tin Coated air coils



7300 S.W. 44th Street  
Oklahoma City, OK 73179  
Phone: 405-745-6000  
Fax: 405-745-2051  
climatemaster.com



geoexchange.org



Made in the USA



ClimateMaster works continually to improve its products. As a result, the design and specifications of each product at the time for order may be changed without notice and may not be as described herein. Please contact ClimateMaster's Customer Service Department at 1-405-745-6000 for specific information on the current design and specifications. Statements and other information contained herein are not express warranties and do not form the basis of any bargain between the parties, but are merely ClimateMaster's opinion or commendation of its products.

We are a proud supporter of the Geothermal Exchange Organization - GEO. For more information visit [geoexchange.org](http://geoexchange.org)

The management system governing the manufacture of ClimateMaster's products is ISO 9001:2008 certified.